

Panasonic®

Operating Instructions

Home Photo Printer

Model No. **KX-PX20M**



Thank you for purchasing this Panasonic Home Photo Printer.

- Please read this manual carefully to ensure proper operation. Especially, be sure to read the "Important Safety Instructions" (pages 6 – 9) before using this product. Store this manual and warranty in a safe place for future references.

Accessory Purchases

Purchase Parts, Accessories and Instruction Books online for all Panasonic Products by visiting our Web Site at:

<http://www.pasc.panasonic.com>

or, send your request by E-mail to:

npcparts@us.panasonic.com

Thank you for purchasing a Panasonic Home Photo Printer.

For your future reference

Date of purchase

Serial number (found on the rear of the unit)

Dealer's name and address

Dealer's telephone number

Attach your sales receipt here.

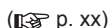


Caution:

Note that the images of printed documents will remain on the used ink sheet. Use discretion when disposing of the used ink cassette.

Notation in these operating instructions

The icons below denote the important information in order that will help you use these operating instructions efficiently.



p. xx : Indicates reference page.



: Indicates the functions that you can use in "Simple Mode" of the operation mode.



: Indicates the functions that you can use in "Normal Mode" of the operation mode.



Printer

: Indicates the functions that you can use with the printer only.



Camera

Printer

: Indicates the functions that you can use when the printer is connected to a digital camera, etc.



TV

Printer

: Indicates the functions that you can use when the printer is connected to a TV.



PC

Printer

: Indicates the functions that you can use when the printer is connected to a computer.

Package Contents

Check that you have all of the following before using the product. If any items are found to be defective or missing during your check, please contact your dealer.

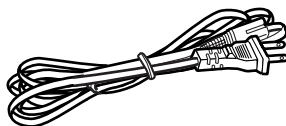
Note that a Paper and Ink set (sold separately) is required in order to print (☞ p. 16).

Photo printer and accessories

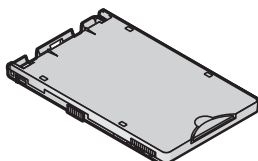
- Photo Printer x 1



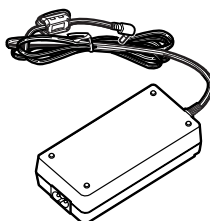
- Power cord x 1
(Part number: PFJA02A007Z)



- Paper cassette x 1
(for Postcard size paper and Wide size paper)
(Part number: PFZCPX2E)



- AC adaptor x 1
(Part number: PFAP1016
or PFAP1017)



- Remote control x 1
(Part number: PFRM0002)



- Video cable x 1
(Part number: VJA0815-A)



- Coin battery (CR2025) x 1

Others

- Operating Instructions
(this manual) x 1

- Quick guide (in Spanish) x 1

- CD-ROM (Printer Driver) x 1

- Starter kit
- Ink cassette x 1
(for postcard size paper,
enough for 5 prints)
 - Postcard size paper ... 5 sheets
(5 sheets x 1 bag)

Table of Contents

Before Use	
Package Contents.....	3
Important Safety Instructions.....	6
Notes on Use.....	10
Names and Functions of Each Part	12

Preparation	
Connecting a Power Source	14
Inserting Battery into the Remote Control	14
Paper and Ink Cassettes (Sold Separately).....	16
Handling	16
Inserting the Paper	18
Inserting the Ink Cassette	20

Printing	
PictBridge Printing with a Digital Camera.....	22
Printing with the LCD Monitor	24
Changing the language	26
Simple Mode and Normal Mode.....	28
Printing single image	30
Printing multiple images	32
Printing all images on a memory card	34
Printing an index	35
Printing using DPOF settings	37

Changing Settings	
Print Settings	39
Printing date	39
Borderless printing	41
LUMIX Date Printing	43
Image Adjustment of Printing image	45
Device Settings	50
Saving Printer Settings	53
Restoring Default Settings	54

Advanced Operations

Searching for Images	55
Selecting All Images	58
Slide Show	60
Slide show of selected images	62
Slide show settings	63
Trimming/Rotating Images	65
Creating Calendars	67
Composite Printing	74
Printing with a TV	80

With PC

Printing with a Computer	81
System requirements	81
Installing the printer driver	82
Printing from the computer	86
Status monitor	86
License agreement	87

Others

If a Paper Jam Occurs	88
LED Indicators	90
Troubleshooting	91
Message Display	98
Maintenance	102
Specifications	103
List of Factory Settings	104
Additional Information	105
Warranty	107
Customer Services	109
Index	110

Important Safety Instructions

When using this unit, basic safety precautions should always be followed to reduce the risk of fire, electric shock, or personal injury.

1. Read and understand all instructions.
2. Follow all warnings and instructions marked on the unit.
3. Unplug this unit from wall outlets before cleaning. Do not use liquid or aerosol cleaners. Use a dry cloth for cleaning.
4. Do not use this unit near water, for example near a bathtub, wash bowl, kitchen sink, etc.
5. Place the unit securely on a stable surface. Serious damage and/or injury may result if the unit falls.
6. Do not cover air vents on the unit. They are provided for ventilation and protection against overheating. Never place the unit near radiators, or in a place where proper ventilation is not provided.
7. Use only the power source marked on the unit. If you are not sure of the type of power supplied to your home, consult your dealer or local power company.
8. Do not place objects on the power cord. Install the unit where no one can step or trip on the cord.
9. Do not overload wall outlets and extension cords. This can result in the risk of fire or electrical shock.
10. Do not damage the power cord, plug or AC adaptor. Consult your dealer in case where these items need to be repaired.
11. Do not touch the plug with wet hands.
12. Do not use a damaged plug or AC adaptor or slack cord. Insert the power plug fully and firmly.
13. Regularly clear away dust from the power plug.
14. Never push any objects through slots in this unit. This may result in the risk of fire or electric shock. Never spill any liquid on the unit.
15. To reduce the risk of electric shock, do not disassemble this unit. Take the unit to an authorized service center when service is required. Opening or removing covers may expose you to dangerous voltages or other risks. Incorrect reassembly can cause electric shock when the unit is subsequently used.
16. Unplug this unit from wall outlets and refer servicing to an authorized service center when the following conditions occur:
 - A. When the power cord is damaged or frayed.
 - B. If liquid has been spilled into the unit.
 - C. If the unit has been exposed to rain or water.
 - D. If the unit does not work normally by following the operating instructions. Adjust only controls covered by the operating instructions. Improper adjustment may require extensive work by an authorized service center.
 - E. If the unit has been dropped or physically damaged.
 - F. If the unit exhibits a distinct change in performance.
17. During thunderstorms, avoid using the unit. There may be a remote risk of an electric shock from lightning.
18. Do not place memory cards within reach of infants. If you believe a child has swallowed a memory card, contact a physician immediately.

**SAVE THESE
INSTRUCTIONS**

WARNING:

- To prevent the risk of fire or electrical shock, do not expose the product to rain or any type of moisture.
- Unplug the product from power outlets if it emits smoke, an abnormal smell, or makes an unusual noise. These conditions can cause fire or electric shock. Confirm that smoke has stopped emitting and contact the Panasonic Call Center at 1-800-211-PANA (1-800-211-7262).

Battery

To reduce the risk of fire or injury to persons, read and follow these instructions.

- Use only the battery specified.
- Keep coin battery out of the reach of small children. If you believe a child has swallowed a coin battery, contact a physician immediately.
- Do not charge, disassemble or remodel the coin battery, subject it to pressure or heat, or place it in water or fire.
- Be sure to check the + and – terminals of the coin battery and insert it correctly.
- Do not allow any metallic object (such as necklace or hair pin) to contact the +/- terminals of the coin battery. Place the battery in a plastic bag or other safe container to ensure that it does not come in contact with any metallic objects.
- If fluid leaks from the battery:
If fluid should for some reason leak from the battery and it comes in contact with your skin or clothes, be sure to flush the affected area thoroughly with water.
Avoid getting any battery leakage in your eyes as this may cause eye damage or loss of eyesight. If you get any battery leakage in your eyes, immediately wash the area with water and consult a physician.

CAUTION:

- The wall outlet shall be installed near the equipment and easily accessible or the power plug or an appliance coupler shall remain readily operable.
- Although the power button is in the "OFF" position, the unit is not completely disconnected from the power supply. Remove the plug from the wall outlet if you will not be using the unit for an extended period of time. Place the unit so the plug can be easily removed.
- Be sure to remove the memory card from the unit before disconnecting the power cord.
- When moving the unit, disconnect the power cord.
- Do not place heavy object on the unit, or sit on it.
- Do not use the unit in a location exposed to sooty or steamy emissions, dampness or excessive dust.
- Avoid placing the unit in locations subject to high temperatures. In particular, avoid placing the unit in locations subject to direct sunlight or close to stoves.
- Take care not to catch your fingers in the opening for the ink cassette and paper cassette.
- Do not touch the paper during printing. Paper moves back and forth 4 times during printing. Do not touch the paper until the printing process has finished.
- Do not touch the thermal head located inside the unit as this may lead to burn injury.

Important Safety Instructions

FCC NOTE: (U.S. only)

This equipment has been tested and found to comply with the limits for a Class B digital device, pursuant to Part 15 of the FCC Rules. These limits are designed to provide reasonable protection against harmful interference in a residential installation. This equipment generates, uses, and can radiate radio frequency energy and, if not installed and used in accordance with the instructions, may cause harmful interference to radio communications. However, there is no guarantee that interference will not occur in a particular installation. If this equipment does cause harmful interference to radio or television reception, which can be determined by turning the equipment off and on, the user is encouraged to try to correct the interference by one or more of the following measures:

- Reorient or relocate the receiving antenna.
- Increase the separation between the equipment and receiver.
- Connect the equipment into an outlet on a circuit different from that to which the receiver is connected.
- Consult the dealer or an experienced radio/TV technician for help.

FCC Caution: To assure continued compliance, follow the attached installation instructions and use only shielded cables when connecting to computer or other devices. Also, any changes or modifications not expressly approved by the party responsible for compliance could void the user's authority to operate this equipment.

This equipment complies with Part 15 of the FCC Rules. Operation is subject to the following two conditions:

(1) This equipment may not cause harmful interference, and (2) this equipment must accept any interference received, including interference that may cause undesired operation.

Responsible party:

Panasonic Corporation of North America
One Panasonic Way,
Secaucus, New Jersey 07094
Phone number: 1-800-211-PANA
(1-800-211-7262)

Information on Disposal in other Countries outside the European Union



This symbol is only valid in the European Union.

If you wish to discard this product, please contact your local authorities or dealer and ask for the correct method of disposal.

Notes on Use

Usage locations

Printer usage location

Do not use in the following locations:

- Locations subject to a lot of dust or lint, as this may lead to inability to print cleanly.
- In direct sunlight, near an air conditioner, or in any other location where temperature may rise above 35 °C (95 °F) or fall below 5 °C (41 °F). There is a risk of causing malfunction, deformation, or damage to the printer.
- On a piano or a carpeted surface. There is a risk of causing damage or discoloration.
- Where it can be exposed to tobacco smoke. There is a risk of causing the printer to malfunction.

Keep away from magnetic and/or electronic hardware.

In order to prevent adverse electromagnetic effects, be sure to operate as far away as possible from the following type of appliances.

- Mobile phones, microwave ovens, electronic game units and stereo speakers.

Do not use the printer vertically.

This may cause the printer to malfunction.

If the printer's inner components overheat

When the ambient temperature is high or when continuous printing has been performed, printing operations may temporarily halt in order to keep the internal temperature of the printer from rising. Printing will automatically resume when the internal temperature of the printer goes down. Ensure that the printer is used in a well-ventilated location.

When ambient temperatures are low

To maintain high quality image output, the printer does not begin printing until the internal temperature has warmed up, so it may take some time before printing starts. Printing starts automatically once the temperature has risen sufficiently.

To prevent the printer deformation and keep the case finish

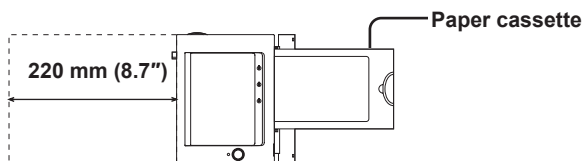
Do not spill or allow any volatile solvents, such as benzene, paint thinner, or other solvents or insecticide to come in contact with the printer. Also, do not maintain contact with the printer by rubber or vinyl-coated materials for an extended period of time. This may damage the surface of the printer or cause the case finish to peel.

Required space during printing

Paper is ejected and inserted from the rear panel of this printer during printing.

Do not place any objects within 220 mm (8.7") of the rear panel of the printer. Use the printer on a flat surface, not doing so may lead to paper jams.

Top view



Storage

Storing paper and ink cassettes

After use, remove the paper cassette from the printer, close the cassette lid, leaving any remaining paper in the paper cassette. Then insert the paper cassette into a plastic bag and store so that it lies flat.

Avoid placing the paper and ink cassette in locations subject to high temperature, high humidity or direct sunlight. After opening the original packaging, use all the paper as soon as possible.

When the printer is not to be used for an extended period of time

- To conserve electric power, turn off the printer's power and disconnect the power cord. (The printer will continue to consume approximately 1.5 W of power even after the unit is turned off by pressing the POWER button if it is plugged in.) Leaving the printer idle for long periods may impair functionality. Make sure you turn the printer's power on and operate the printer at least once every six months.
- Remove the paper cassette, ink cassette and memory card from the printer. Then close the printer covers.

About the LCD monitor

- Do not apply direct pressure to the LCD monitor screen. Doing so can cause uneven color display and can permanently damage the monitor.
- In a place with drastic temperature changes, condensation may form on the LCD monitor. Wipe it with a soft, dry cloth.

Extremely high precision technology is employed to produce the LCD monitor screen. The result is more than 99.99 % effective pixels with a mere 0.01 % of the pixels inactive or always lit. However, this will not be printed.

- Be advised that the color and contrast of the printed image may differ slightly from the appearance of the LCD monitor. This is normal and does not indicate a malfunction.

Copy-prohibited items

Copying of software is prohibited

Copying of software supplied with this printer for unauthorized commercial purposes or copying on networks is prohibited.

Copying of prohibited material

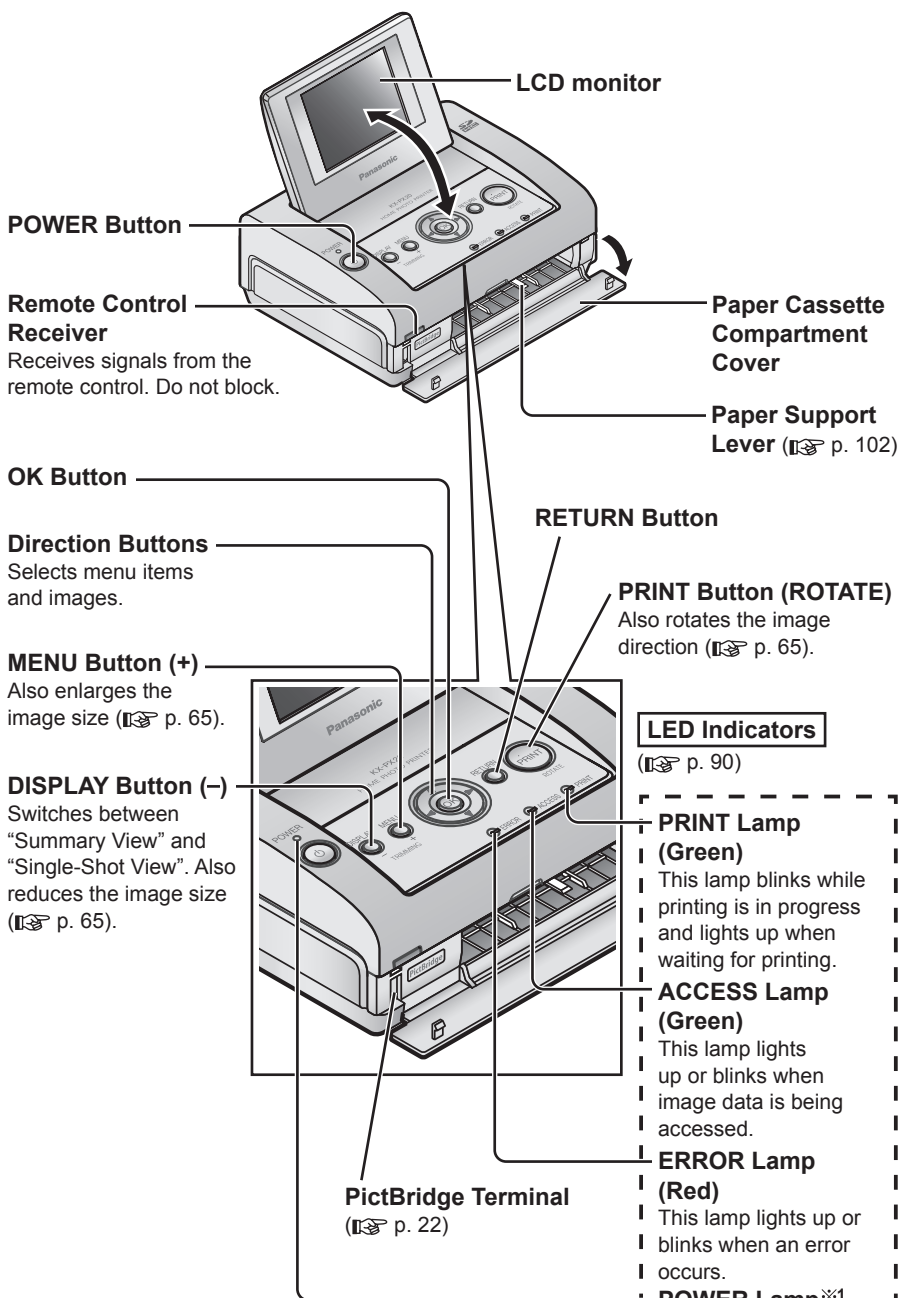
Printing of monetary notes or marketable securities is illegal and a criminal offence depending on the intention and means of application of the printed material.

When disposing of, transferring ownership or returning the printer

- **Note that information you have printed will remain in the ink cassette after printing. Be sure to dispose of the ink cassette to avoid unexpected damages due to distribution of this information (👉 p. 21).**

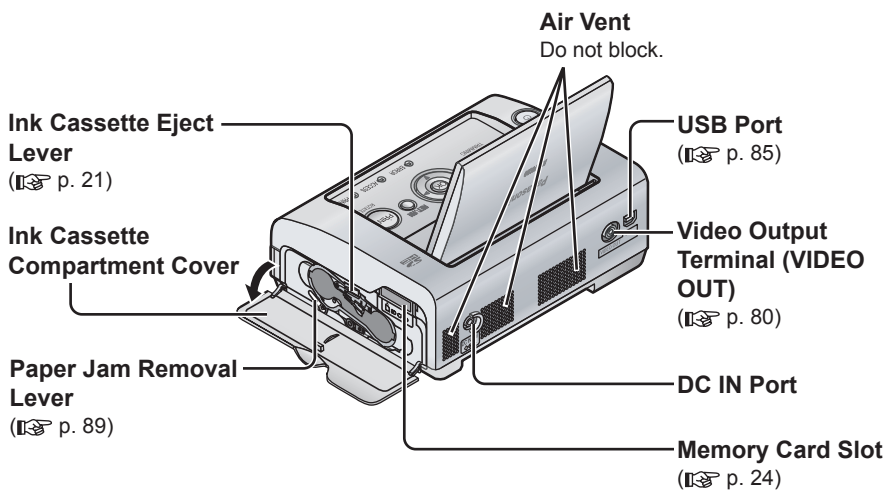
Names and Functions of Each Part

Front View

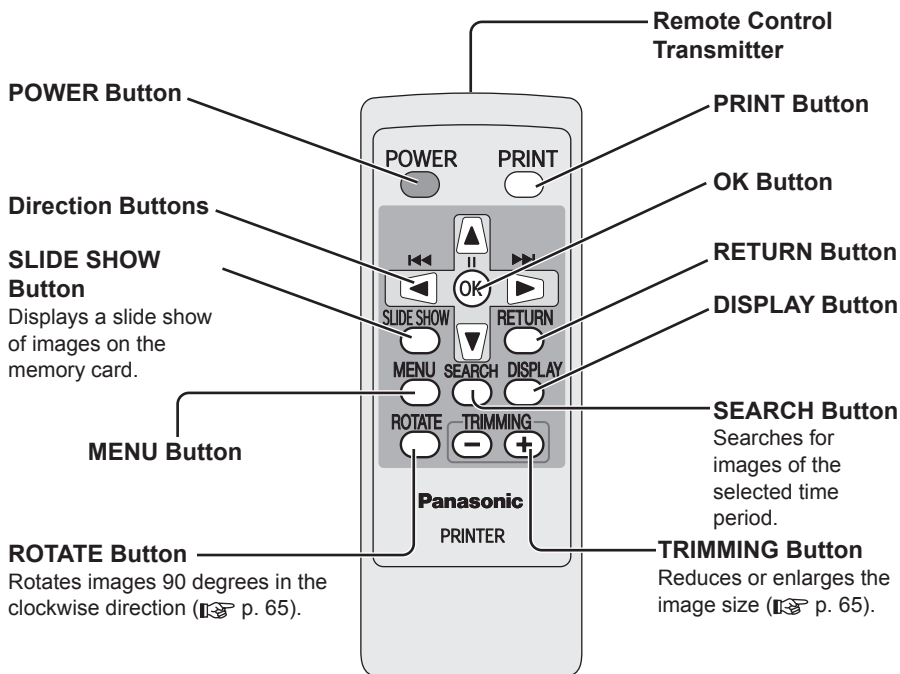


※1 Power is off (Standby mode): Red (Lit)
Power is on: Green (Lit)
The LCD monitor is sleeping: Green (Blink)

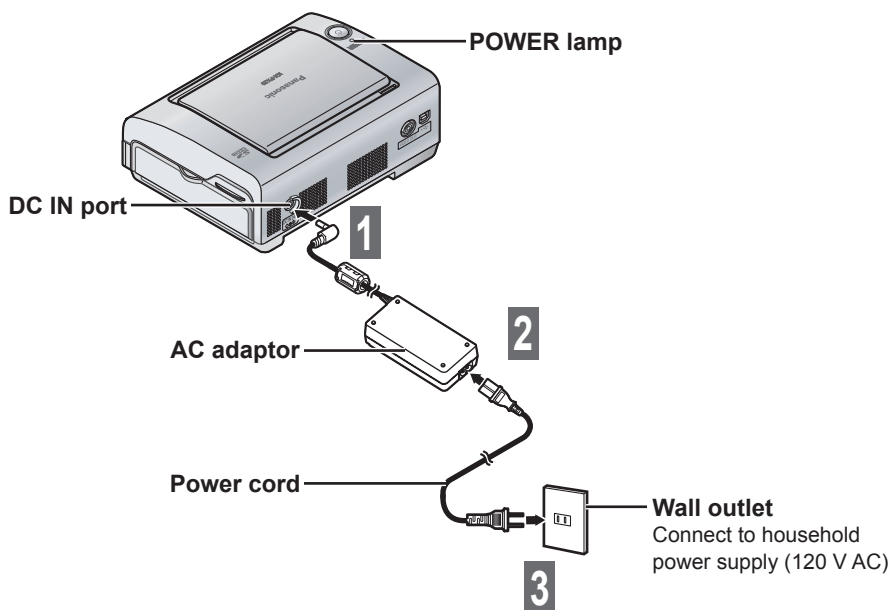
Rear View



Remote Control



Connecting a Power Source

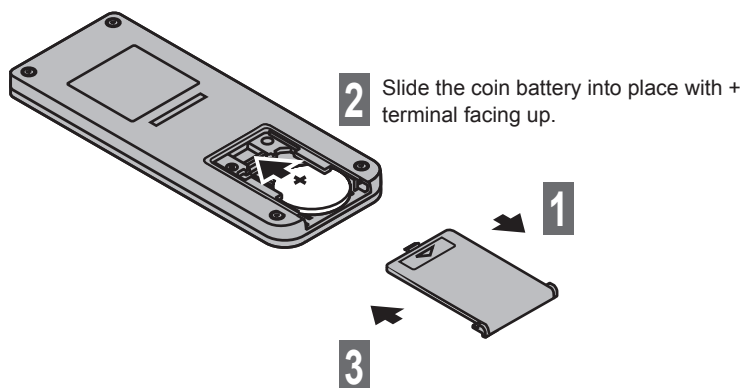


When the power cord is connected to wall outlet, the POWER lamp lights up in red (standby mode).

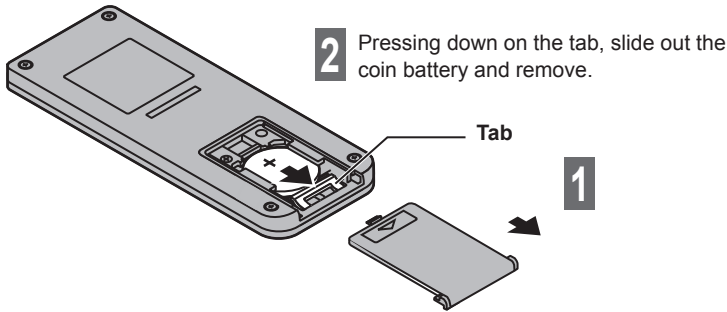
CAUTION:

- Never touch the power cord during a lightning storm.
- When you operate this product, the wall outlet should be near the product and easily accessible.
- Use only the included AC adaptor and power cord.

Inserting Battery into the Remote Control



● To remove the coin battery



Caution

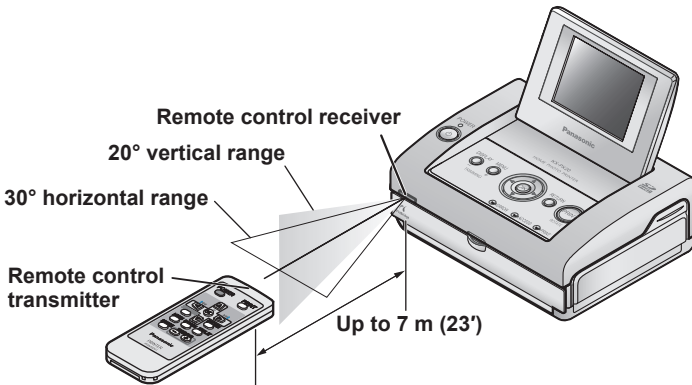
- Risk of explosion if the battery is incorrectly replaced. Replace only with type CR2025.
- Dispose of used batteries according to local regulations.

For residents of the state of California

This product contains a CR Coin Cell Lithium Battery which contains Perchlorate Material – special handling may apply.

See www.dtsc.ca.gov/hazardouswaste/perchlorate

■ Remote control operational range



Important

- Make sure there are no objects blocking the path between the printer and the remote control. The remote control may fail to operate the printer.
- Do not allow the printer's remote control receiver to come in contact with direct sunlight or strong fluorescent light. This may prevent the printer from working properly.

Paper and Ink Cassettes (Sold Separately)

- Starter kit is included (5 sheets of postcard size paper).

Use only paper and ink cassettes in the Paper and Ink set described below.

Paper and ink cassettes are kits consisting of paper and ink together.

Do not use postcard and ink jet type paper.

(This will cause paper jams and the printer to malfunction.)

- **Ensure that only the ink cassette and papers, which come together as part of a set, are used with the printer.** The ink cassettes included in the Paper and Ink set provide enough ink to print the number of sheets included in the Paper and Ink set. Always replace the ink cassette when using a new Paper and Ink set.
- Do not mix other Paper and Ink sets, as quality printouts may not be possible.

Please purchase separately sold accessories from your dealer.

Item	Model No.	Paper size	Remarks
Paper and Ink set (Protective coating)	KX-PVMS36KM	101 x 152 mm ^{※1} (3.98" x 5.98")	• Ink cassette x 1 (enough for 36 prints) • Postcard size paper ... 36 sheets (18 sheets x 2 bags)
	KX-PVMS108KM	101 x 152 mm ^{※1} (3.98" x 5.98")	• Ink cassette x 3 (a cassette provides enough ink to print 36 sheets) • Postcard size paper ... 108 sheets (18 sheets x 6 bags)
	KX-PVMS20WM	101 x 180 mm ^{※1} (3.98" x 7.09")	• Ink cassette x 1 (enough for 20 prints) • Wide size paper ... 20 sheets (20 sheets x 1 bag)

※1 This represents the paper size per sheet (after cutting).

Handling

Paper and Ink set

- Before using a Paper and Ink set, ensure that you acclimatize the Paper and Ink set to the ambient temperature prior to opening. In particular, if the Paper and Ink set has been stored at a low temperature, condensation (☞ p. 93) may occur due to the difference in temperatures.
- Avoid storing paper and ink cassettes in places subject to high temperature, high humidity or direct sunlight. This may lead to deterioration of print quality or prevent printing capability.

During printing

- Do not open the ink cassette compartment cover, as print quality may be reduced.
- Do not remove the paper cassette or ink cassette.
- Do not pull the paper while it is moving.
- Be sure to remove printed paper before 10 or more sheets have piled up. Failure to do so may result in a paper jam. Be particularly sure to remove paper with a high degree of curl before it piles up.
- Do not touch the print surface with your fingers.

After printing

- Do not remove unused sheets of paper from the paper cassette. Close the cassette lid, then insert the paper cassette into a plastic bag and store so that it lies flat.
- After removing the paper cassette, close the paper cassette compartment cover to prevent dust from getting inside the printer.
- Remove the ink cassette and store it in a plastic bag or other safe container.

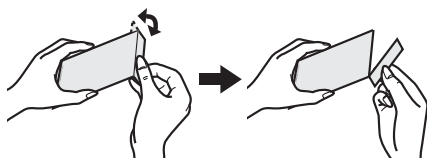
Handling printed paper

- Pay special attention to the following, otherwise discoloration, fading and color transfer may occur.
 - Do not allow objects such as vinyl desk mats, name card cases, or plastic erasers to come in contact with the printed surfaces. When storing printed paper in an album, select holder sleeves made of nylon, polypropylene or cellophane.
 - Do not allow any volatile solvents such as alcohol to come in contact with the printed surface.
 - Do not touch the printed surface.
 - Do not leave printed surfaces in contact with one another, or place any other papers on printed surfaces for a certain period of time.
 - Do not store printed paper in locations subject to high temperature, high humidity, or direct sunlight.
- When writing on a printed surface, use permanent markers (oil-based) only. You may use permanent markers (oil-based), water-based markers, pencils and oil-based ball point pens to write on the back of printed papers.
- You can use printed images for your personal enjoyment. Copyright laws prevent their use in any other way without the written permission of the copyright holders.
- **Do not reuse paper that has already been printed on.**

In the case where a picture was printed to only a portion of the paper, do not attempt to reuse and print a second image on the same sheet at a later time. Doing so will damage the print ink cartridge and could permanently damage the printer.

Note

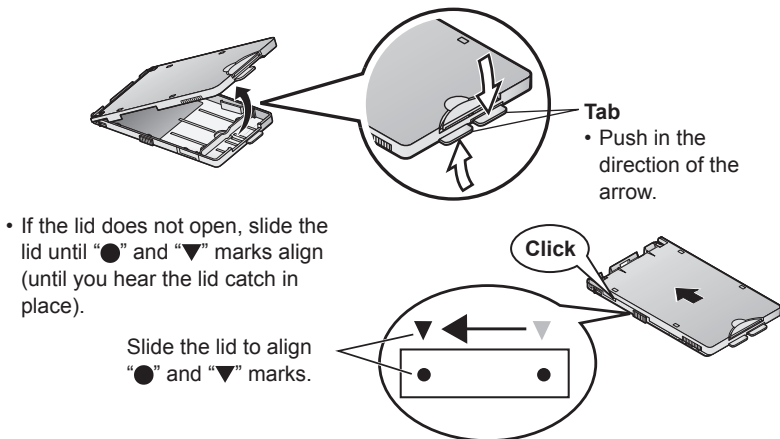
- When cutting paper after printing, fold the paper along the perforated line. Then reverse the fold in the opposite direction and cut the paper along the folded line.
- If you are printing on the reverse side of a sheet with a different printer, the ink may take some time to dry.



Inserting the Paper

For details on paper, refer to page 16.

1 Open the paper cassette lid.



2 Insert paper in the paper cassette.

- Do not reuse paper that has already been printed on.

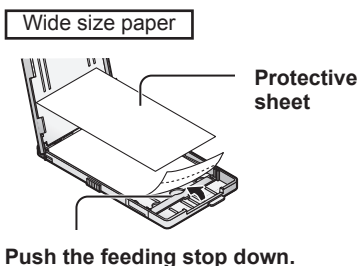
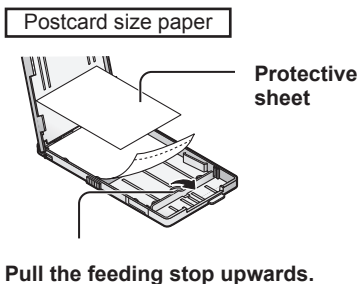
1 Adjust the feeding stop according to the paper size you want to use.

2 Fan the paper to avoid multi-sheet feeds. Place the paper in the paper cassette without removing protective sheet so as not to touch the print surface.

- The protective sheet will stick out a little bit.

3 Remove the protective sheet and close the paper cassette lid.

- Take care not to leave fingerprints on the paper.

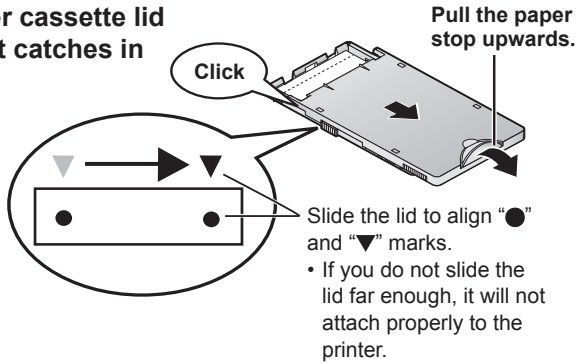


3

Insert the paper cassette to the printer.

Slide the paper cassette lid forward until it catches in place.

1

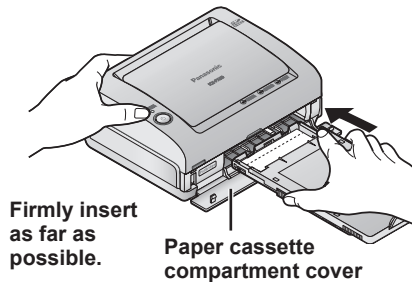


2 Pull the paper stop upwards.

Open the paper cassette compartment cover and insert the paper cassette firmly while holding the unit.

3

- Make sure that the positions of the "●" and "▼" do not shift when attaching the paper cassette.
- If the positions of the "●" and "▼" are misaligned, paper may not feed correctly.



Important

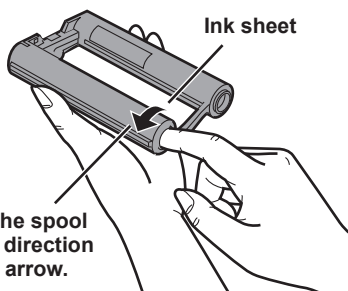
- Do not load more than 18 sheets of paper (or 20 sheets of wide size paper) in the paper cassette.
- Be sure to remove printed paper before 10 or more sheets have piled up.
- Do not touch the print surface (the plain, glossy side) or allow it to get dirty. Clear prints may become impossible if the print surface gets dirty, stained by fingerprints, or wet with water.
- Do not bend or fold the paper or load it in the cassette with the reverse side facing upward.
- Do not stretch the paper. This may lead to paper jam or prevent printing capability.
- Do not remove the perforated section before printing.
- Do not affix stamps or adhesive seals to the paper before printing.
- Do not print on the paper with a word processor before printing with this printer.
- Do not write on the paper before printing with this printer.
- Do not remove unused sheets of paper from the paper cassette. Close the cassette lid, then insert the paper cassette into a plastic bag and store so that it lies flat.

Inserting the Ink Cassette

For details on ink cassette, refer to page 16.

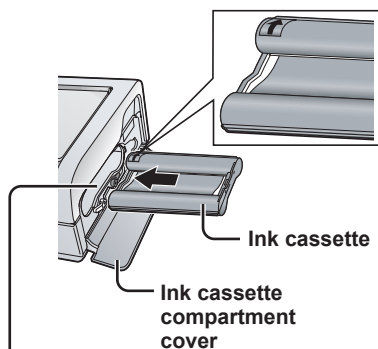
1 If the ink sheet is slack, tighten it.

- Turn in the direction of the arrow displayed on the ink cassette.



2 Open the ink cassette compartment cover and insert the cassette into the printer.

- Insert the ink cassette as far as it will go with the arrow mark facing forward until it catches in place.
- If you cannot insert the ink cassette until it catches in place (☞ p. 92).



When using the printer for the first time, be sure to remove the padding used during transportation.

3 Close the ink cassette compartment cover.

Removing the ink cassette

1

Open the ink cassette compartment cover.

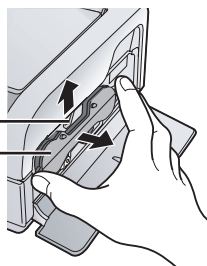
2

Pull the ink cassette as shown in the figure to the right.

3

Close the ink cassette compartment cover.

① Pull the ink cassette eject lever (green) upward.



② Pull the ink cassette straight out.

Notice of Ink Cassettes

The numbers of the ink sheets and papers in the Paper and Ink set are matched. An ink cassette provides enough ink to print 36 sheets of paper (20 sheets of paper when using wide size paper). Store the ink cassette and papers used together. The number of the rest of papers give an indication of the number of the rest of the ink sheets. (If you use a sheet of paper more than twice, the number of the rest of the ink sheets may not be matched.)

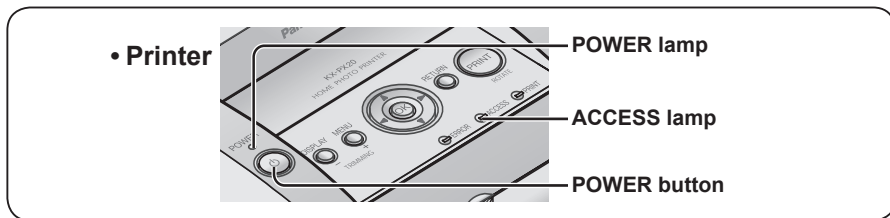
Important

- Do not open the ink cassette compartment cover during printing, as print quality may be reduced.
- Do not reuse a used ink cassette and be sure to dispose according to local regulations.
- Do not touch or pull on the ink sheet until it is used up.

PictBridge Printing with a Digital Camera



You can connect the printer to a PictBridge compatible digital camera or digital video camera to print recorded images. An example of connecting to the Panasonic digital camera LUMIX (DMC-FX9) is described here.



1 Insert the memory card into the digital camera.

2 Turn the digital camera on and set it to PictBridge mode.

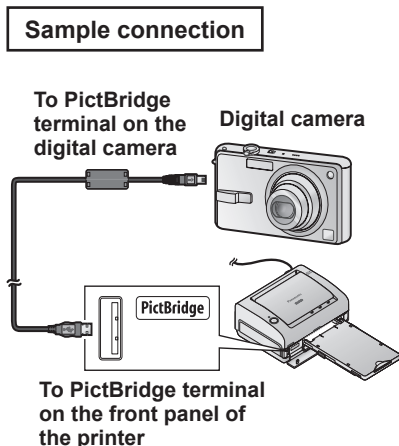
- For details on how to operate the digital camera, refer to the digital camera's operating instructions.

3 Turn the printer on.

- Press the POWER button on the remote control or the printer. The POWER lamp on the printer lights up in green.
- **Turning off the power (Standby mode)**
Press the POWER button for approximately 1 second. The POWER lamp lights up in red.

4 Connect the digital camera to the printer using the USB cable provided with the digital camera.

- Do not connect the digital camera to the printer when the printer is processing a print job, as print quality may be reduced.
- The ACCESS lamp on the printer blinks twice.



5 Follow the on-screen instructions on the digital camera to proceed the printing operation.

6 When printing has finished, turn the printer off and disconnect the USB cable.

Important

- Connect only PictBridge compatible devices to the PictBridge terminal.
- Do not connect a USB flash drive to the printer. This printer does not support USB flash drives.
- Do not disconnect the cable or turn off the power while the ACCESS lamp is lit. (This may damage the data or could result in a malfunction of the printer.)
- Refer to the digital camera's operating instructions for a description of PictBridge operations.

Note

- Certain PictBridge compatible devices may not operate correctly with this printer.
- If an error occurs, depending on the model, the digital camera may not display or operate properly. Turn the camera and printer off and then turn them back on.
- TIFF format images cannot be printed directly from PictBridge compatible devices such as digital cameras (👉 p. 103).
- When printing images with DPOF settings from PictBridge compatible devices, settings such as the date are controlled by the DPOF setting.
- Settings on the printer driver (👉 p. 82 – 85) have no effect when printing directly from PictBridge compatible devices.
- When printing from a PictBridge compatible devices, image adjustments made on the printer side are disabled.
- **PictBridge** is an industry standard from CIPA, (Camera & Imaging Products Association) for direct printing. It allows images to be printed directly from digital cameras to a printer, without having to connect the camera to a computer.

Printing with the LCD Monitor



You can print images stored on SD Memory Card or MultiMediaCard.

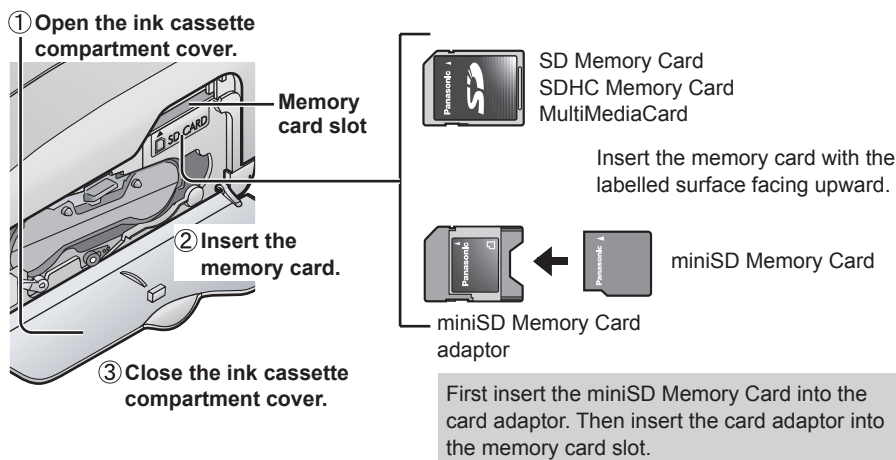
Do not change the paper size during operations. Otherwise, printing will be impossible.

1 Performing the procedures in "Preparation"

(☞ p. 14 – 21)

2 Inserting a memory card

This printer supports SD Memory Cards, SDHC Memory Cards, MultiMediaCards, and miniSD Memory Cards (adaptor required). SD Memory Card, SDHC Memory Card, MultiMediaCard, miniSD Memory Card, and miniSD Memory Card adaptor are not provided with the printer.



- To remove the card, push the card in and release.

Important

- Push the memory card all the way in until it clicks into place.
- Do not remove the memory card when displaying images stored on the memory card on the LCD monitor or a TV.
- To print from a PictBridge compatible device, such as a digital camera, connected directly to the printer, insert the memory card into the device.

Note

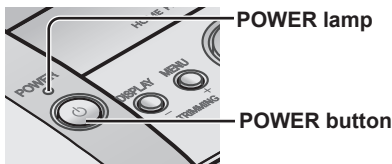
- This printer may not operate with some SD Memory Cards or SDHC Memory Cards. For example, SD Memory Cards with more than 2 GB in memory are not supported.
- Image formats that can be displayed/printed
This printer is able to display and print JPEG and TIFF format images. However, there are cases when these format images cannot be displayed or printed. No image will be displayed in this case. For details, refer to "Specifications" on page 103.

3

Turning the power on

Press the POWER button. POWER lamp on the printer will light up in green.

- **Printer**



Same operations are also possible using the remote control. (For the button names on the remote control, refer to page 13.)

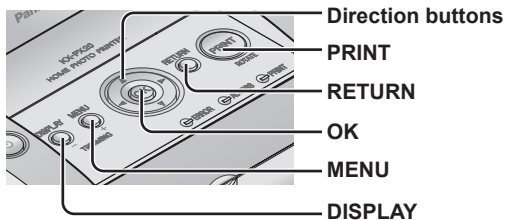
- **Turning off the power (Standby mode)**

Press the POWER button for approximately 1 second. The POWER lamp lights up in red.

Printing with the LCD Monitor (continued)



• Printer



• The direction buttons are represented in this manual as follows.

	Press Up, Down, Left or Right.
	Press Up or Down.
	Press Left or Right.

Same operations are also possible using the remote control. (For the button names on the remote control, refer to page 13.)

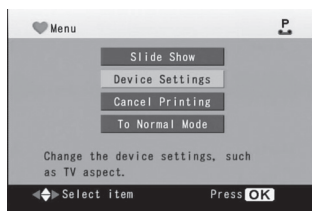
Changing the language

You can change the language used for the setting screen.

1 Press (MENU).

• For "Normal Mode", refer to page 50.

2 Press to select [Device Settings] and press (OK).



3 Press to select [Language] and press (OK).



4 Press to select the language to be used and press (OK).

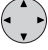






5

Press  to select [OK] and press  (OK).



To cancel changes

Press  to select [Cancel] and press  (OK) or press  (RETURN).

- If the screen shown to the right is displayed, press  to select [Yes] and press  (OK).



Printing with the LCD Monitor (continued)



Simple Mode and Normal Mode

You can select "Simple Mode" or "Normal Mode". "Simple Mode" allows beginners to easily operate the printer by limiting the functions used to basic functions only. "Normal Mode" is more advanced as it allows you to use all functions. (Default setting is "Simple Mode".)

Item	Simple Mode (●: Available) (—: Not available)	Page	
Printing single image	●	30 – 31	
Printing multiple images	●	32 – 33	
Printing all images on a memory card	—	—	
Printing an index	—	—	
Creating Calendars	—	—	
Composite Printing	—	—	
Printing using DPOF settings	—	—	
Slide Show	● (Not available: Slide show setting, etc.)	60 – 61	
Searching for Images	—	—	
Selecting All	—	—	
Print Settings	Printing Date	●	30, 33
	Borderless Printing	— (Fixed in "Borderless")	—
	LUMIX Mode	— (Fixed in "OFF")	—
Image Adjustment of Printing image	— (Fixed in bellow) Effect: OFF, Auto Mode: Auto, Density/Balance: OFF, Color Levels: OFF, White Balance: OFF	—	
Device Settings	●	50 – 52	

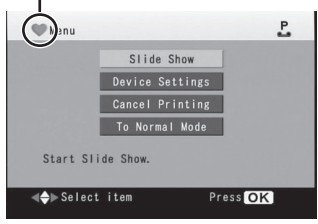
Switching Simple Mode and Normal Mode

1

Press  (MENU).

- In Simple Mode, the explanation of the item is shown on the bottom of the screen.

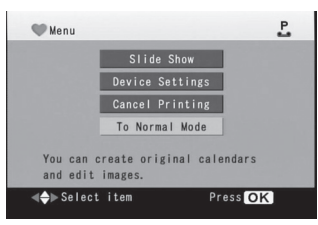
The "heart" icon appears when using Simple Mode.





2

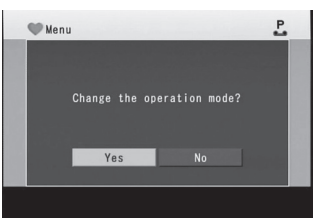
Press  to select [To Normal Mode] and press  (OK).

- In Normal Mode, select [To Simple Mode].



3

Press  to select [Yes] and press  (OK).



Note

- You cannot switch Simple Mode and Normal Mode while printing.
- When the power is turned off normally by pressing the POWER button, the operation mode ("Simple Mode" or "Normal Mode") is saved (p. 104).

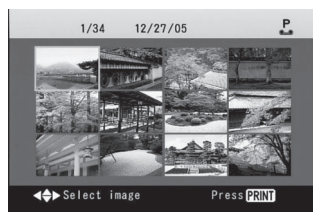
Printing with the LCD Monitor (continued)



Printing single image **N**

1

Press to move the cursor and select the image you want to print.



2

Press (**PRINT**).

Check the preview.

Then press (**PRINT**).

• In Simple mode,

Press to select [Without Date Print] or [With Date Print] and press (**OK**).

• If you select [With Date Print], you can print image date information (including the shooting date) on the lower right corner of the image.

• If the date has already been added on the image by a digital camera, etc., the date may be printed twice (doubled) when you select [With Date Print].

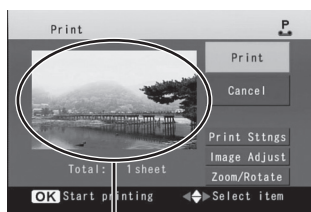
Select [Without Date Print] to print only the date added by a digital camera, etc.

• Printing begins.

• If you press to select [Cancel] and press (**OK**), the display will return to the "Summary View" or the "Single-Shot View".

3

("Print" screen of Normal Mode)



Preview

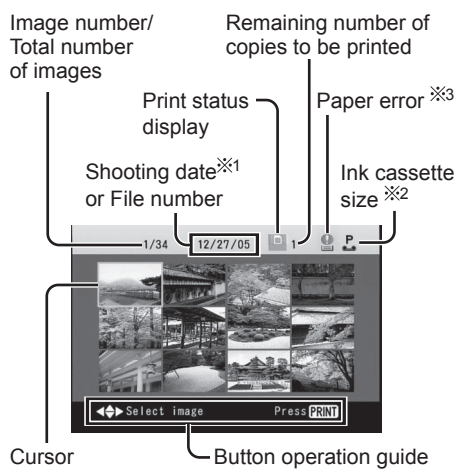
("Print" screen of Simple Mode)



Note

- It may take some time until the images are displayed depending on the type of memory card and image format.
- Depending on the type of the memory card used, the image may appear flickered on the TV screen or white bands may appear around the image. This has no effect on the printed image.

Image display



Summary View



Single-Shot View

● To change pages

- When displaying a “Summary View” display

Press

- When displaying a “Single-Shot View” display

Press

- ※1 The date of the file will be displayed for images that do not include shooting date information.
- ※2 “P” is displayed for the postcard size. “W” is displayed for the wide size.
- ※3 “Paper error” will be displayed when a printing error involving paper has occurred.


● To switch display


You can switch between “Single-Shot View” display and “Summary View” display by

pressing (DISPLAY).

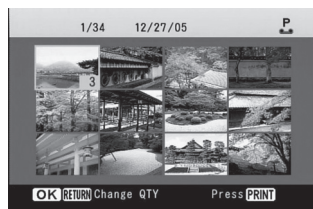


Printing multiple images **N**

1 Press  to move the cursor and select the image you want to print.

Press  (OK) to set the number of copies.

- The number of copies will increase one by one each time you press this button. Up to 10 copies can be set for each image.



2 ● To reduce the number of copies

 (RETURN).

- Each time you press this button, the number of copies is reduced by one.

● To cancel all settings regarding number of copies





Refer to page 59.

3 Repeat steps **1** and **2** to specify the number of copies for images you want to print.

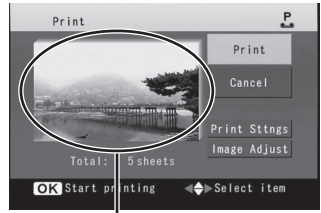
4 Press  (PRINT).

Check the preview.

Then press  (PRINT).

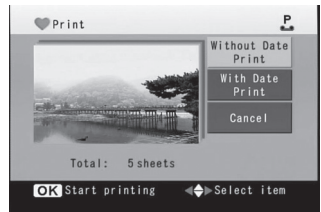
- In Simple mode, Press  to select [Without Date Print] or [With Date Print] and press  (OK).
- If the date has already been added on the image by a digital camera, etc., the date may be printed twice (doubled) when you select [With Date Print].
Select [Without Date Print] to print only the date added by a digital camera, etc.
- Printing begins.
- If you press  to select [Cancel] and press  (OK), the display will return to the "Summary View" or the "Single-shot View".

("Print" screen of Normal Mode)






The first image is displayed.

("Print" screen of Simple Mode)








● To stop print job midway

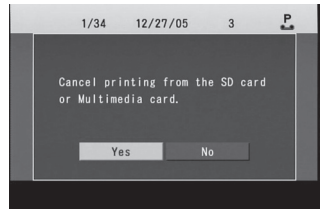
- Press and hold  (RETURN) until the screen shown to the right is displayed.

Press  to select [Yes] and press  (OK).

- You can also stop from the menu.

- ① Press  (MENU).
- ② Press  to select [Cancel Printing] and press  (OK).
- ③ Press  to select [Yes] and press  (OK).

- The printing for the paper currently being printed will be completed and subsequent printing is halted.



Printing with the LCD Monitor (continued)



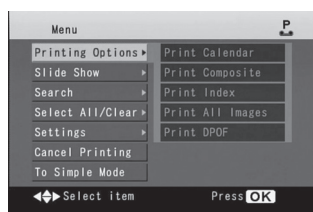
Printing all images on a memory card **N**

This function is available in "Normal mode" only. Switch to "Normal mode" (☞ p. 29).

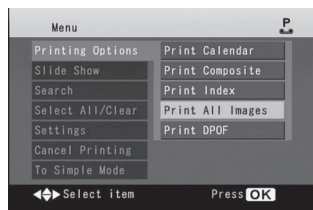
You can print all images on a memory card, one image per sheet.

1 Press ^{MENU} (MENU).

2 Press to select [Printing Options] and press (OK).



3 Press to select [Print All Images] and press (OK).

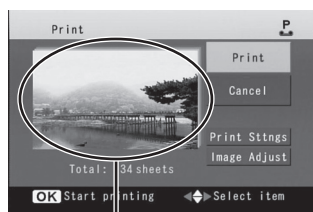


4 Check the preview.
Then press (PRINT).

- Printing begins.
- If you press to select [Cancel] and press (OK), the display will return to the "Menu" screen.

• To stop print job midway

- Press and hold ^{RETURN} (RETURN) (☞ p. 33).
- You can also stop from the menu (☞ p. 33).
- The printing for the paper currently being printed will be completed and subsequent printing is halted.



The first image is displayed.

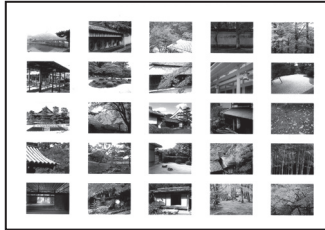
Note

Up to 99 sheets can be printed by one operation.

Printing an index **N**



This function is available in "Normal mode" only. Switch to "Normal mode" (p. 29).



You can print an index of images on the memory card, showing 25 thumbnail images per sheet of paper (30 thumbnail images when using wide size paper).

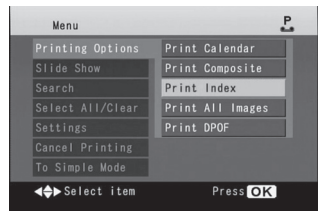
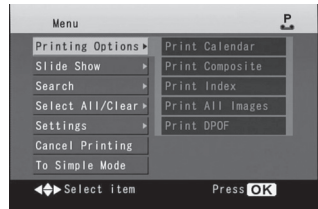


Index print

1 Press  (MENU).

2 Press  to select [Printing Options] and press  (OK).

3 Press  to select [Print Index] and press  (OK).



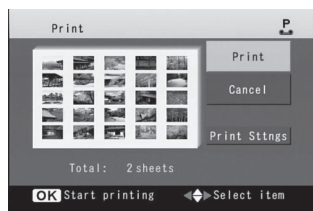
Printing with the LCD Monitor (continued)

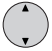



Check the preview.


Then press  (PRINT).

- Printing begins.
- You can select [ON] or [OFF] in the [Date] setting of the [Print Sttns].
- You can select [Oldest to Newest] or [Newest to Oldest] in the [Print Order] setting of the [Print Sttns].



- 4 If you press  to select [Cancel] and press  (OK), the display will return to the "Menu" screen.

● To stop print job midway

- Press and hold  (RETURN) (p. 33).
- You can also stop from the menu (p. 33).
- The printing for the paper currently being printed will be completed and subsequent printing is halted.

Note

- Each image is printed as one thumbnail on an index.
- You cannot set the number of copies for index.
- If there are multiple folders in the memory card, the images may not be displayed by arranging in order with newest date or oldest date even if you select [Oldest to Newest] or [Newest to Oldest] in the [Print Order] of the [Print Sttns].

Printing using DPOF settings **N**



This function is available in "Normal mode" only. Switch to "Normal mode" (👉 p. 29).



You can select the images to be printed and the number of copies to be made using a DPOF compatible digital video camera or digital camera. When you have inserted a memory card containing DPOF settings into the printer, you can print images according to the setting.


Before operation

Insert the memory card containing images with DPOF settings into the printer (👉 p. 24).

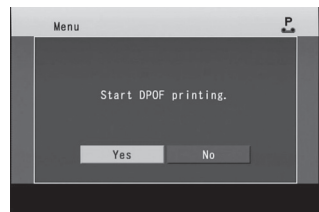
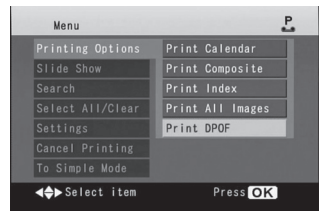
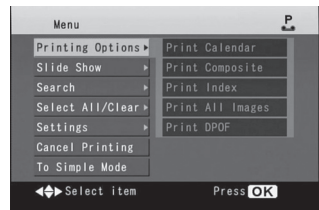
1 Press  (MENU).

2 Press  to select [Printing Options] and press  (OK).

3 Press  to select [Print DPOF] and press  (OK).

4 Press  to select [Yes] and press  (OK).




- Printing begins.
- Images are printed using the settings (number of copies, date, etc.) specified in the camera or DPOF compatible software.





Printing with the LCD Monitor (continued)



● To stop print job midway

- Press and hold ^{RETURN}  (RETURN) ( p. 33).
- You can also stop from the menu ( p. 33).
- The printing for the paper currently being printed will be completed and subsequent printing is halted.

Note

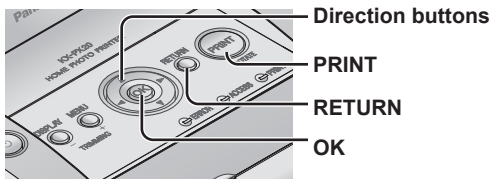
- You cannot perform this operation when the total number of copies to be printed with DPOF settings exceeds 999.
- Settings in the [Print Settings] ( p. 39 – 44) and [Image Adjustment] ( p. 45 – 49) are not reflected in DPOF printing.
- You cannot apply DPOF settings to images using this printer.
- Up to 10 copies per image can be printed when using DPOF printing.
- DPOF is an abbreviation for Digital Print Order Format. You can add print information, etc. to images stored on memory cards by using digital video cameras and digital cameras and use that information in other DPOF compatible devices.

Print Settings



Settings in the [Print Settings] are not applied when printing a calendar (☞ p. 67 – 73) and printing a composite image (☞ p. 74 – 79).

• Printer



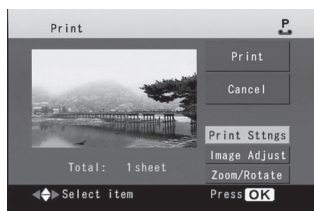
Same operations are also possible using the remote control. (For the button names on the remote control, refer to page 13.)

Printing date **N**

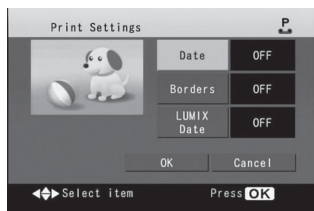
This function is available in "Normal mode" only. Switch to "Normal mode" (☞ p. 29).

You can print image date information (including the shooting date) on the lower right corner of the image.

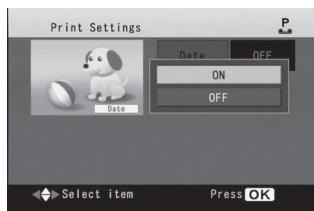
1 Press to select [Print Stngs] on the "Print" screen and press (OK).



2 Press to select [Date] and press (OK).



3 Press to select [ON] and press (OK).

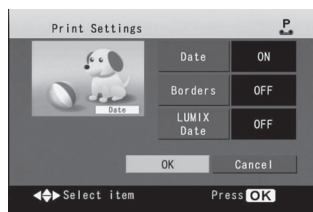


Print Settings (continued)






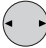

4

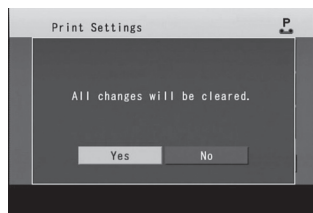
Press  to select [OK] and press  (OK).



To cancel changes

Press  to select [Cancel] and press  (OK) or press  (RETURN).

- If the screen shown to the right is displayed, press  to select [Yes] and press  (OK).





Note

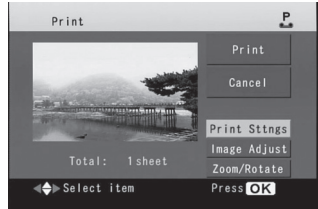
- Factory setting for [Date] is [OFF].
- Date is not displayed on images displayed on the LCD monitor and the TV screen.
- To print an image without date information, set [Date] to [OFF] in the [Print Sttns].
- If you want to print all images using the same settings, select [Settings] → [Print Settings] on the "Menu" screen and change the desired items (p. 53, "Saving Printer Settings").
- You cannot print date for images with no date information stored on a memory card.
- The date information printed for images edited and saved on a computer will differ from the actual image shooting date.
- Print date format can be changed if you alter the settings under [Date Format] on [Device settings] (p. 50 – 52).
- If the date has already been added on the image by a digital camera, etc., the date may be printed twice (doubled) when you set [Date] and/or [LUMIX Date] (p. 43 – 44) to [ON]. Set [Date] and [LUMIX Date] to [OFF] in order to print only the date added by a digital camera, etc.



Borderless printing **N**

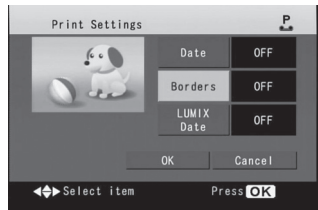
This function is available in "Normal mode" only. Switch to "Normal mode" (p. 29).



You can select whether to print images with borders or not.

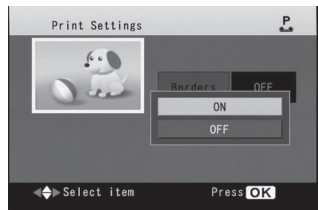
1 Press  to select [Print Sttns] on the "Print" screen and press  (OK).





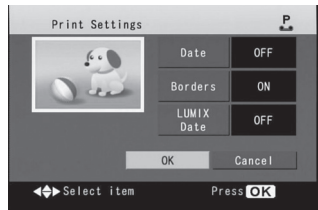
2 Press  to select [Borders] and press  (OK).



3 Press  to select [ON] or [OFF] and press  (OK).



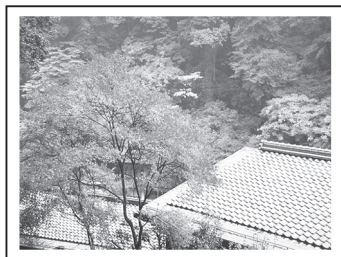
4 Press  to select [OK] and press  (OK).



Print Settings (continued)



With borders






Whole part of the image is printed on the paper with margins on the paper edges.

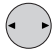

Borderless

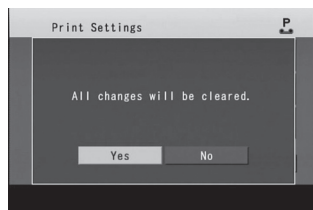


Part of the image is cut off and there is no margin spacing on the paper edges.

To cancel changes

Press  to select [Cancel] and press  (OK) or press  (RETURN).

- If the screen shown to the right is displayed, press  to select [Yes] and press  (OK).



Note

- Factory setting for [Borders] is [OFF].
- If you want to print all images using the same settings, select [Settings] → [Print Settings] on the "Menu" screen and change the desired items (see p. 53, "Saving Printer Settings").



LUMIX Date Printing **N**

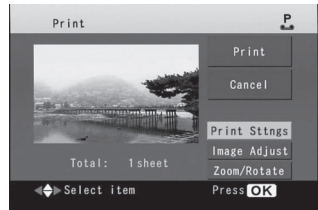
This function is available in "Normal mode" only. Switch to "Normal mode" (▶▶ p. 29).



If date and age information has been recorded for images using LUMIX Travel Date and Baby mode with a Panasonic LUMIX digital camera, they are printed in the lower right corner of the image.

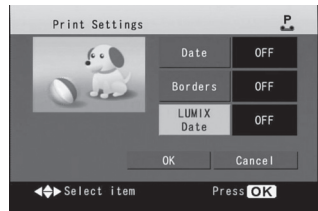
Before operation



Insert a memory card containing the images for which information has been recorded using LUMIX Travel Date and Baby mode.

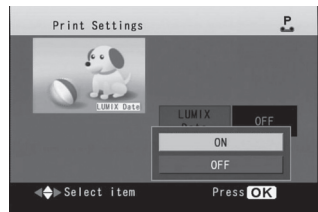
- 1 Press  to select [Print Sttns] on the "Print" screen and press  (OK).





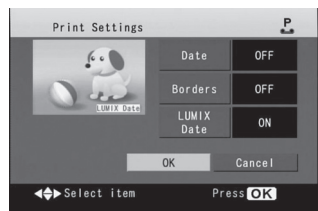
- 2 Press  to select [LUMIX Date] and press  (OK).



- 3 Press  to select [ON] and press  (OK).



- 4 Press  to select [OK] and press  (OK).

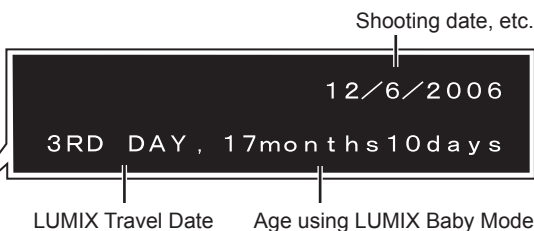
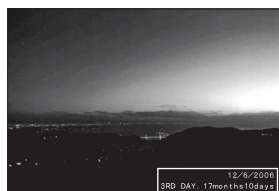


Print Settings (continued)



• Samples of LUMIX Date printing




- LUMIX Date: ON, Date: ON





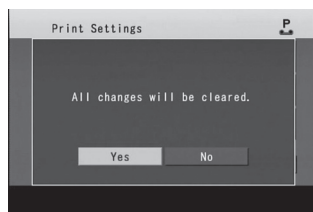
- LUMIX Date: OFF, Date: ON



■ To cancel changes

Press  to select [Cancel] and press  (OK) or press  (RETURN).

- If the screen shown to the right is displayed, press  to select [Yes] and press  (OK).



Note

- For details on settings available in LUMIX Travel Date and Baby mode, refer to the operating instructions provided with the Panasonic LUMIX digital camera.
- Factory setting for [LUMIX Date] is [OFF].
- LUMIX Travel Date and age using LUMIX Baby mode are not displayed on the LCD monitor and the TV screen.
- If you want to print all images using the same settings, select [Settings] → [Print Settings] on the "Menu" screen and change the desired items (p. 53, "Saving Printer Settings").
- If the date has already been added on the image by a digital camera, etc., the date may be printed twice (doubled) when you set [Date] (p. 39 – 40) and/or [LUMIX Date] to [ON]. Set [Date] and [LUMIX Date] to [OFF] in order to print only the date added by a digital camera, etc.

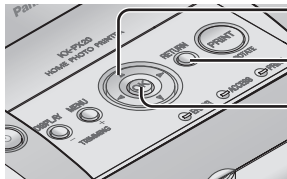
Image Adjustment of Printing image



This function is available in “Normal mode” only. Switch to “Normal mode” (p. 29).

You can adjust the image quality on “Image Adjustment” screen.

• Printer





Direction buttons

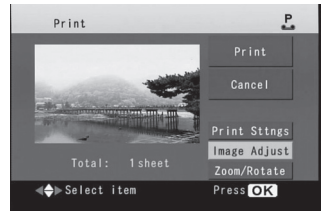
RETURN



OK

Same operations are also possible using the remote control. (For the button names on the remote control, refer to page 13.)

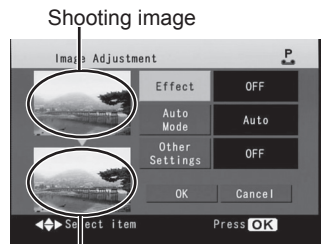
1 Press  to select [Image Adjust] on the “Print” screen and press  (OK).

- The image on the preview screen is not exact print image, just for your reference.





2 Press  to select the item to be changed and press  (OK).

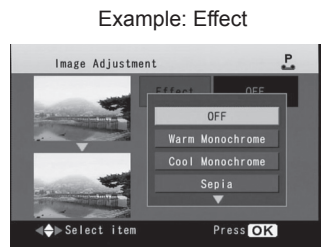
- For details on [Image Adjustment] items, refer to page 47 – 49.



Preview after adjustment

3 Press  to select an option and press  (OK).



- When changing [Effect] and [Auto Mode] settings, go to step **6**.
When changing [Other Settings], go to step **4**.



Example: Effect



Image Adjustment of Printing image (continued)

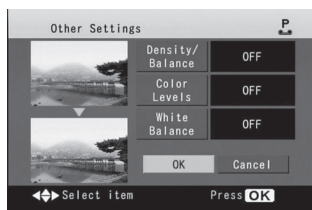




4 After you have made image adjustments by pressing , press  (OK).

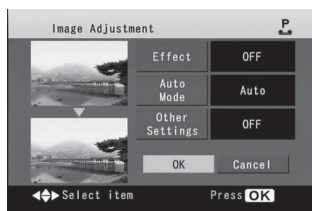
Example: Density/Balance






5 Press  to select [OK] and press  (OK).



6 Press  to select [OK] and press  (OK).



To cancel changes

Press  to select [Cancel] and press  (OK) or press  (RETURN).

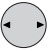

- If the screen shown to the right is displayed, press  to select [Yes] and press  (OK).



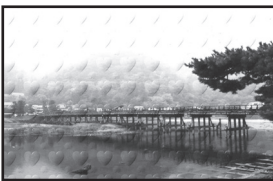
Image Adjustment items

●Effect

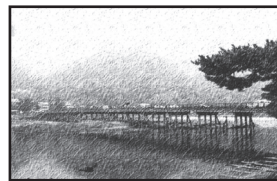
Gives special effects to an image when printed. You can select from the following items.



Item	Result
OFF	Prints images without special effects.
Warm Monochrome	Prints images with a warm monochrome effect.
Cool Monochrome	Prints images with a cool monochrome effect.
Sepia	Prints images with a sepia effect.
Warm	Prints images emphasizing warm colors.
Cool	Prints images emphasizing cool colors.
Soft Portrait	Prints images with a portrait effect.
Embossed Heart	Prints images with background pattern of hearts.
Oil Painting	Prints images so they resemble oil paintings on canvas.
Japanese Paper	Prints images as if drawn on Japanese paper.
Convex Sphere	Prints images so they appear convex.
Concave Sphere	Prints images so they appear concave.



Example: Embossed Heart



Example: Oil Painting

Image Adjustment of Printing image (continued)



●Auto Mode

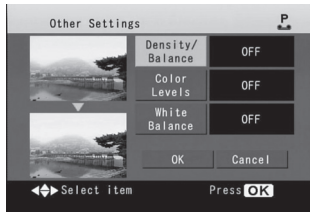
Automatically adjusts the brightness and contrast.



Item	Result
OFF	No brightness/contrast adjustment.
Auto	Adjusts image brightness/contrast automatically.
Soft Skin	Adjusts image brightness/contrast to make skin appear smoother.
Indoor	Adjusts image brightness/contrast to give darker images brighter exposure.
Vividness	Adjusts image brightness/contrast to print more vividly.
Night Scenery	Adjusts image brightness/contrast to print night scenery with a more natural balance between dark and light positions.

●Other Settings

Set brightness and contrast values to suit your taste. (Density/Balance, Color Levels, White Balance)



Item	Result
Density/Balance	Adjusts image brightness, color saturation, contrast, edge sharpness. <ul style="list-style-type: none"> • Brightness: Adjusts image brightness. • Saturation: Adjusts image color brilliance. • Contrast: Adjusts image brightness contrast. • Sharpness: Adjusts image contours.
Color Levels	Adjusts image color tones. Select a color from the color palette.
White Balance	Adjusts colors more naturally according to light source. Select [OFF] or [Auto].

Note

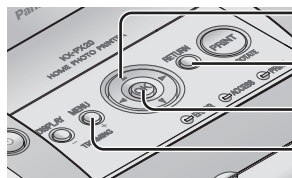
- Factory settings for [Effect] is [OFF], [Auto Mode] is [Auto], and other settings are [OFF].
- When not adjusting image, printing uses the following conditions:
(Effect: OFF, Auto Mode: Auto, Other Settings: OFF)
- If you want to print all images using the same settings, select [Settings] → [Image Adjustment] on the “Menu” screen and change the desired items (p. 53, “Saving Printer Settings”).
- The image on the preview screen is not exact print image, just for your reference.
- Adjustments made to the TV display do not affect the print quality.

Device Settings



You can change the print date format, language used for the setting screen, automatic LCD monitor OFF, image information format, TV aspect ratio.

• Printer



Direction buttons

RETURN

OK

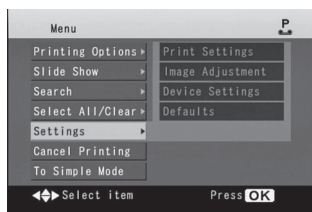
MENU

Same operations are also possible using the remote control. (For the button names on the remote control, refer to page 13.)

1 Press (MENU).

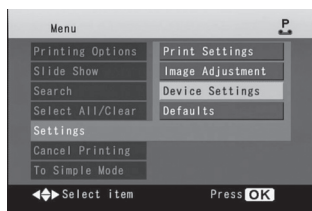
2 Press to select [Settings] and press (OK).

• For the Simple Mode screen, refer to page 29.

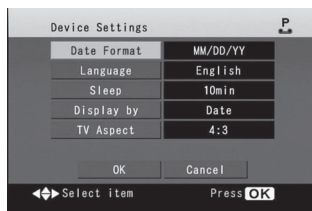


3 Press to select [Device Settings] and press (OK).



• For the Simple Mode screen, refer to page 29.

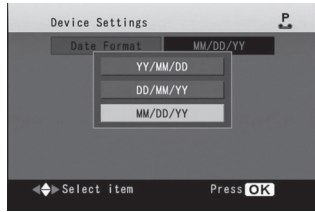


4 Press to select the item to be changed and press (OK).





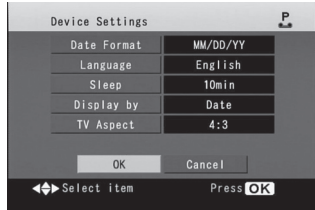
5

Press  to select the desired option on the option select screen and press  (OK).








6

Press  to select [OK] and press  (OK).



To cancel changes

Press  to select [Cancel] and press  (OK) or press  (RETURN).

- If the screen shown to the right is displayed, press  to select [Yes] and press  (OK).



Device Settings (continued)



Item	Description	Setting options (Bold item indicates initial setting)
Date Format	Specifies print date format as year (YY), month (MM) and day (DD).	YY/MM/DD DD/MM/YY MM/DD/YY
Language	Changes the display language.	Deutsch (German) English Español (Spanish) Français (French) Italiano (Italian) Japanese
Sleep※ ¹	The LCD monitor is automatically turned off※ ² 1 minute after the message "The monitor is entering sleep mode following the set period of inactivity. Press any button to resume operations." is displayed, if the printer has not been used for the time selected. Press any button to resume operations.※ ³	OFF (The LCD monitor is not automatically turned off.) 5min 10min
Display by※ ⁴	Selects image information format (Date, File number)	Date File Number
TV Aspect	Changes the aspect ratio of the TV screen. Select the aspect ratio that matches your TV.	4:3 16:9※ ⁵

※¹ The POWER lamp blinks in green when the sleep mode is on.

※² TV screen is not turned off while displaying the message.

※³ To resume with the POWER button, press the POWER button for approximately 1 second.

※⁴ The information displayed is below

- Date: Displays image date information (including the shooting date information, etc.).
The date of the file will be displayed if images do not include shooting date information.

- File Number: Displays file number of image complied with DCF.

※⁵ If you select "16:9", the display of the LCD monitor will lengthen vertically.

Saving Printer Settings **N**

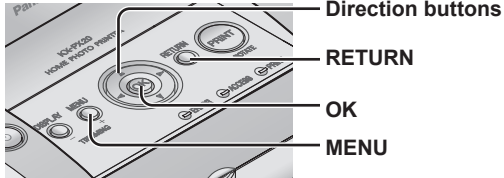


This function is available in “Normal mode” only. Switch to “Normal mode” (☞ p. 29).

You can save the customised settings in [Print Settings], [Image Adjustment] and [Device Settings].



These settings will be saved even if the printer’s power is turned off.

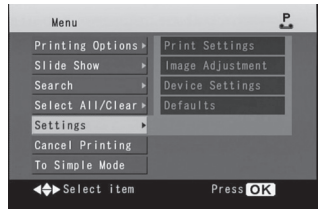
• Printer



Same operations are also possible using the remote control. (For the button names on the remote control, refer to page 13.)

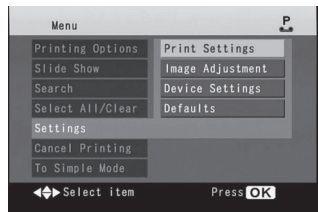
1 Press  (MENU).

2 Press  to select [Settings] and press  (OK).



3 Change various setting.

- For details on [Print Settings], refer to page 39 – 44.
- For details on [Image Adjustment], refer to page 45 – 49.
- For details on [Device Settings], refer to page 50 – 52.



Note

The above settings are saved when the power is turned off normally by pressing the POWER button (☞ p. 104).

Restoring Default Settings **N**



This function is available in “Normal mode” only. Switch to “Normal mode” (☞ p. 29).

Performing this operation initializes all settings to the default values (factory settings).

• Printer



Direction buttons



RETURN

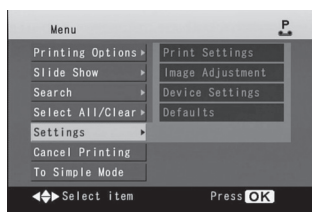
OK



MENU

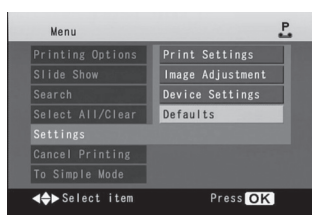
Same operations are also possible using the remote control. (For the button names on the remote control, refer to page 13.)

1 Press  (MENU).

2 Press  to select [Settings] and press  (OK).

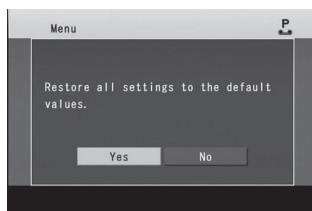


3 Press  to select [Defaults] and press  (OK).



4 Press  to select [Yes] and press  (OK).

• For details on those settings which will be initialized and the factory settings, refer to page 104.



Searching for Images **N**



This function is available in “Normal mode” only. Switch to “Normal mode” (👉 p. 29).

You can search for images within a specified period and display these images in “Summary View” display.

• Printer



Direction buttons



RETURN



OK

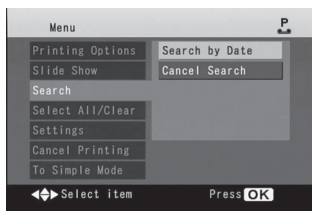
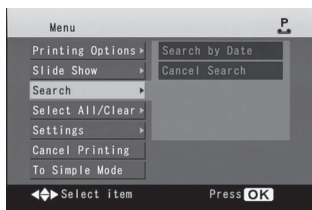
MENU

Same operations are also possible using the remote control. (For the button names on the remote control, refer to page 13.)

1 Press  (MENU).

2 Press  to select [Search] and press  (OK).

3 Press  to select [Search by Date] and press  (OK).



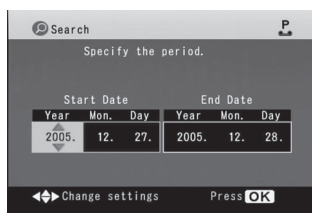
Searching for Images (continued) **N**



Specify the start date and end date.

4

	Moves within the date items (year, month, day).
	Specifies year, month, day.



Press (OK).

5

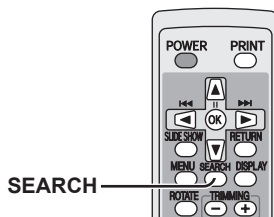
- When the search has finished, a list of images that fall within the specified range appears. If no images fall within the specified period, "No images were found" is displayed and the display will return to the screen shown in **4**.

The "magnifying glass" icon appears when using the [Search by Date] feature.



• When using the remote control

- ① Press the [SEARCH] button on the remote control.
- ② Select [Search by Date] and press [OK] button.
- ③ Set the start date and end date to use in the search.
- ④ Press [OK] button.





Note

- The previously selected setting for the number of copies to be made of the image will be cancelled when using the [Search by Date] feature.
- The date information printed for images edited and saved on a computer may differ from the actual image shooting date.
- Specifiable range from 1980 January 1 to 2029 December 31.
- If there are multiple folders in the memory card, the images may not be displayed by arranging in order with oldest date when using the [Search by Date] feature.

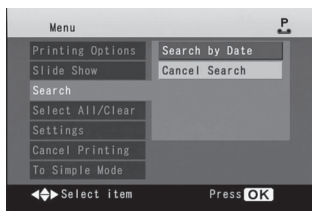
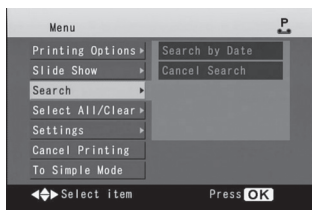
Exiting search mode

To return to a "Summary View" display of all images, perform the following procedures.

1 Press  (MENU).

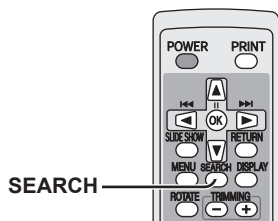
2 Press  to select [Search] and press  (OK).

3 Press  to select [Cancel Search] and press  (OK).



● When using the remote control

- 1 Press the [SEARCH] button on the remote control.
- 2 Select [Cancel Search] and press [OK] button.



Selecting All Images **N**







This function is available in “Normal mode” only. Switch to “Normal mode” (👉 p. 29).



You can set the number of copies for all images on the memory card to a single print.

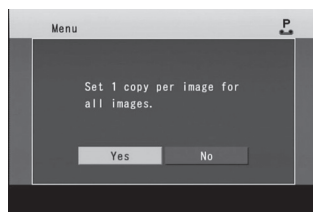
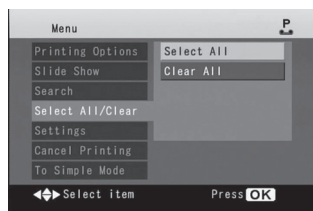
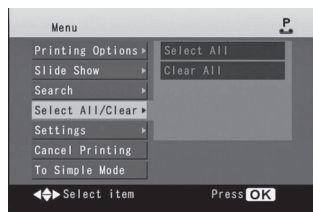
After you have selected all images, you can increase or decrease the number of copies to be made for each separate image (👉 p. 32 – 33).

1 Press  (MENU).

2 Press  to select [Select All/Clear] and press  (OK).

3 Press  to select [Select All] and press  (OK).

4 Press  to select [Yes] and press  (OK).





To clear the number of copies for all images

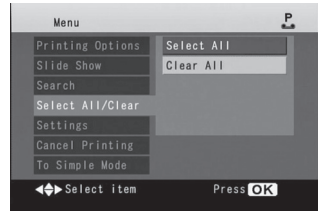
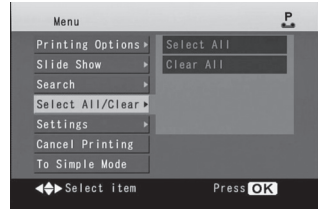
You can set the number of copies for all images to 0.

1 Press  (MENU).

2 Press  to select [Select All/
Clear] and press  (OK).

3 Press  to select [Clear All]
and press  (OK).

4 Press  to select [Yes]
and press  (OK).



Slide Show



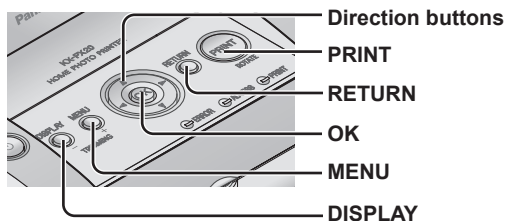
The slide show feature is used to display images on the memory card one-by-one for a specified period of time each.

You can change the display time for each image in the [Slide Show Setting].



Slide Show display

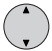

• Printer



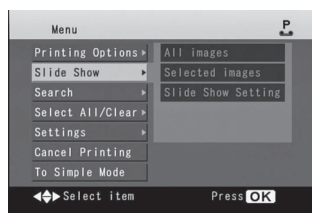
Same operations are also possible using the remote control. (For the button names on the remote control, refer to page 13.)



You can start a slide show from the first image on the memory card.


1 Press  (MENU).

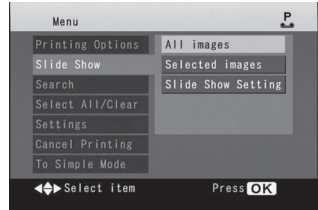
2 Press  to select [Slide Show] and press  (OK).

- In Simple Mode, the slide show starts.
- For the Simple Mode screen, refer to page 29.








Press  to select [All images] and press  (OK).

- To print the currently displayed image, press  (PRINT).

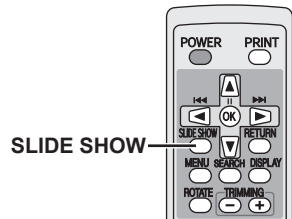


Button functions during a slide show

Button	Function
	Previous image/Next image
	Pause/Resume
DISPLAY 	Operation guide On/Off
RETURN 	Stops slide show.
	Prints currently displayed image.

● When using the remote control

Press [SLIDE SHOW] button on the remote control to start the slide show from the image indicated by the cursor.



Slide Show (continued)





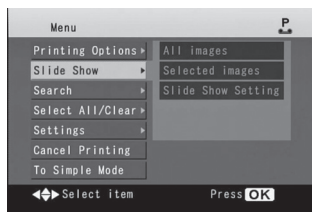
Slide show of selected images **N**



This function is available in "Normal mode" only. Switch to "Normal mode" (p. 29).

To display only selected images in a slide show, first select the images from the "Summary View" display (p. 31).

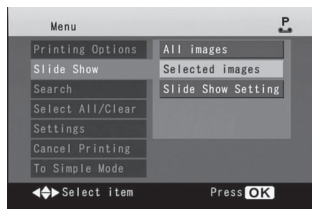
1 Press  (MENU).

2 Press  to select [Slide Show] and press  (OK).



3 Press  to select [Selected images] and press  (OK).

- The slide show of the selected images start.



Important

Do not remove the memory card while an image is being displayed. This may damage the memory card or render the memory card inoperable.

Note



It may take some time until the image is displayed, depending on the size of the images. The actual length of time that slides are displayed for may be longer than the time setting.



Slide show settings **N**



This function is available in "Normal mode" only. Switch to "Normal mode" (p. 29).



You can make changes to the various slide show settings.

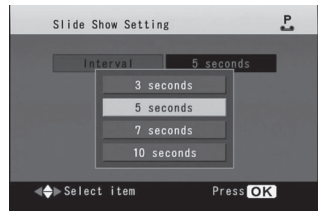
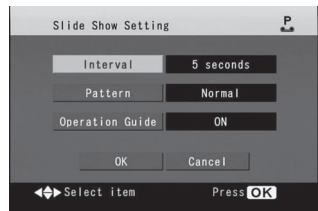
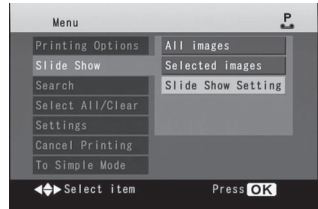
1 Press  (MENU).

2 Press  to select [Slide Show] and press  (OK).

3 Press  to select [Slide Show Setting] and press  (OK).

4 Press  to select the item you want to change and press  (OK).

5 Press  to select the desired option and press  (OK).

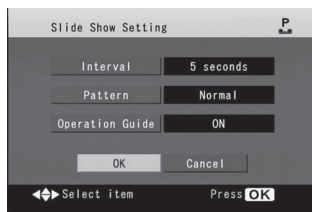


Slide Show (continued)



6

Press to select [OK] and press (OK).

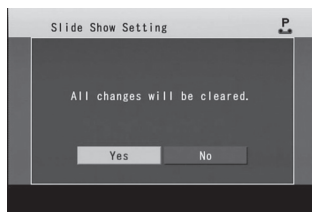


Item	Description	Setting options (Bold item indicates initial setting)
Interval	Specifies the display time for an image.	3 seconds, 5 seconds , 7 seconds, 10 seconds
Pattern	Specifies the transition effect.	Normal: Switches images. Pattern 1: Switches images from top to bottom. Pattern 2: Switches images from the center toward the outside. Pattern 3: Switches images with a mosaic effect. Random: Randomly switches from Pattern 1 through 3, and uses a pattern where images are switched from the outside towards the center.
Operation Guide	Toggles the display of the operation guide shown on the slide show screen.	ON , OFF

To cancel changes

Press to select [Cancel] and press (OK) or press (RETURN).

- If the screen shown to the right is displayed, press to select [Yes] and press (OK).



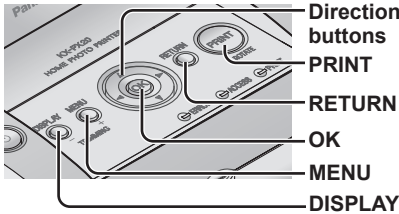
Trimming/Rotating Images **N**



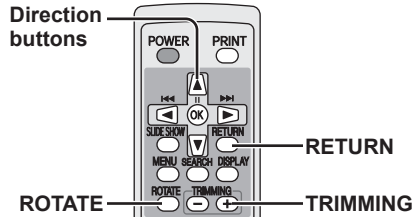
This function is available in “Normal mode” only. Switch to “Normal mode” (p. 29).

You can reduce/enlarge or rotate an image and print. These settings are available on the “Print” screen (p. 30).

• Printer



• Remote control



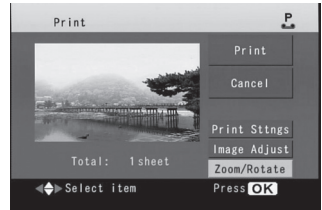
Same operations are also possible using the remote control. (For the button names on the remote control, refer to page 13.)

Press to select [Zoom/Rotate]

on the “Print” screen and press (OK).

1

• [Zoom/Rotate] is not displayed when multiple images have been selected.



Reduce, enlarge, rotate and move image to match the printout image displayed.



Button functions when changing zoom/rotate

2

Main unit	Remote control	Function
		Reduces the image. (Can be reduced up to 20 %)
		Enlarges the image. (Can be enlarged up to 500 %)
	ROTATE 	Each time you press this button, image rotates 90° clockwise.
		Adjusts image position.
	RETURN 	Cancels editing.

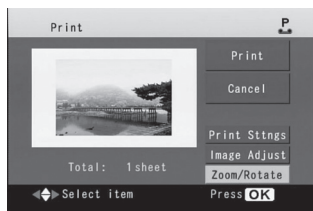
Trimming/Rotating Images (continued)

N



Press **OK** (OK) when finished editing the image.

- 3 • A preview is displayed.



Press **PRINT** (PRINT).

Or press **UP** to select [Print] and press **OK** (OK).

- 4 • If you press **UP** to select [Cancel] and press **OK** (OK), the display will return to the "Summary View" or the "Single-shot View". Changes will be cleared.

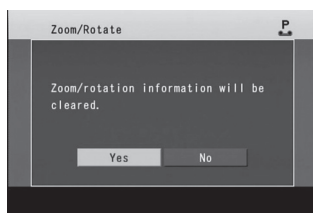


● To stop print job midway

- Press and hold **RETURN** (RETURN) (p. 33).
- You can also stop from the menu (p. 33).
- The printing for the paper currently being printed will be completed and subsequent printing is halted.

To cancel changes

- 1 Press **RETURN** (RETURN).
- 2 If the screen shown to the right is displayed, press **LEFT** to select [Yes] and press **OK** (OK).



Note

- When the image printing has finished, changes will be cleared.
- When enlarging an image, the image quality will deteriorate. The quality of an image displayed on a TV screen may differ from that of the actual print.
- When you have set [Date] and [LUMIX Date] both to [ON] and edited an image, sometimes the date and LUMIX mode information will not be printed depending on the image position. (The result of printing will sometimes differ from the preview.)

Creating Calendars N



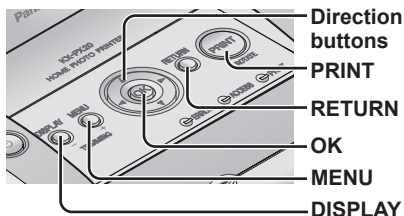
This function is available in “Normal mode” only. Switch to “Normal mode” (p. 29).

You can create original calendars with your favorite images.

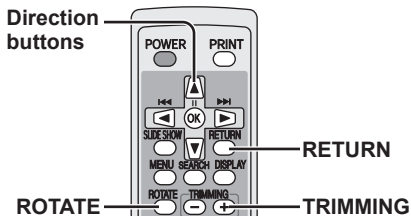
Do not change the paper size during operations. Otherwise, printing will be impossible.



• Printer



• Remote control

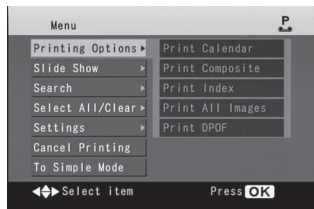


Same operations are also possible using the remote control. (For the button names on the remote control, refer to page 13.)

1 Select frame.



1 Press **MENU** (MENU).

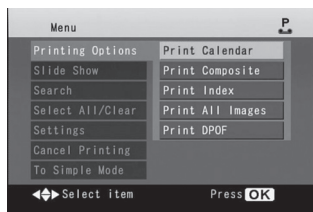
2 Press **DOWN** to select [Printing Options] and press **OK** (OK).





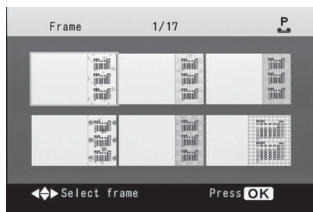
Creating Calendars (continued) **N**





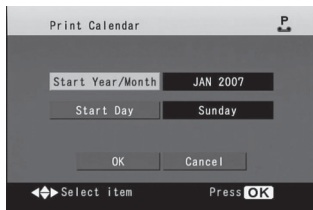
3 Press  to select [Print Calendar] and press  (OK).




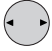

4 Press  to select the desired frame and press  (OK).

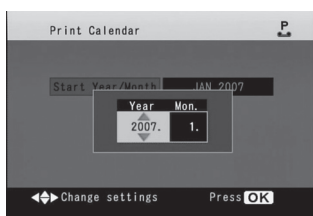


5 Press  to select [Start Year/ Month] and press  (OK).





6 Specify the start year and month, and press  (OK).

	Moves between the year and month setting items.
	Sets the year or month.





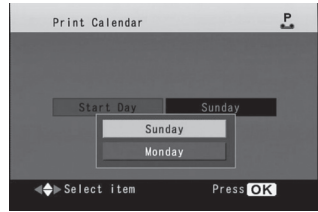
7

Press  to select [Start Day] and press  (OK).





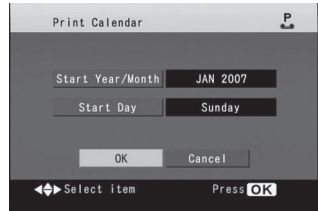
8

Press  to select the start day of week and press  (OK).





9

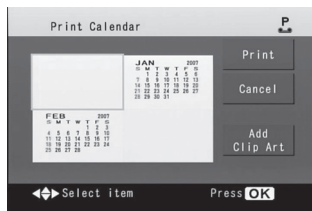
Press  to select [OK] and press  (OK).






2 Select image.

1 Press  to select the image insert position and press  (OK).

- The selected image position is outlined with a yellow border.



2 Press  to select an image and press  (OK).

- To switch to "Single-Shot View" display, press  (DISPLAY).



3 Edit the image using  (Reduce/Enlarge),

 (Rotate),



 (Move) and press

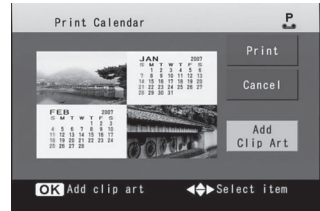
 (OK).



- The image during editing is outlined with a blue border.





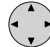

3 Add clip art.

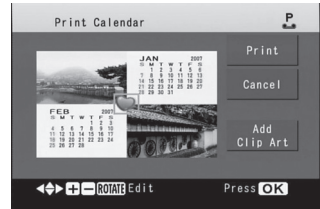
- 1 Press  to select [Add Clip Art] and press  (OK).
- Up to 8 clip art can be applied.




- 2 Press  to select clip art and press  (OK).



- 3 Edit the clip art using  (Reduce/Enlarge),  (Rotate),  (Move) and press  (OK).



- The clip art during editing is outlined with a blue border.
- When you press  (OK), the border for the clip art will disappear.








4 Print.




Press  (PRINT).

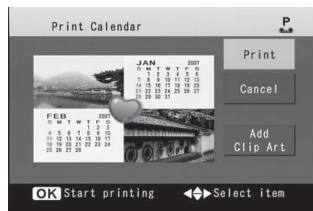
Or press  to select [Print]

and press  (OK).




- Printing begins.
Then the display will return to the screen shown to the right.
- If you press  to select [Cancel] and press  (OK), the screen ( p. 73) will be displayed.
- 1 If you press  to select [Yes] and press  (OK), the display will return to the "Menu" screen and changes will be cleared.

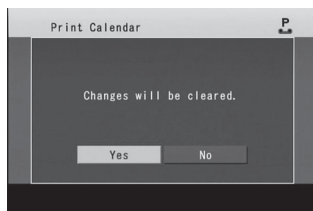
● To stop print job midway

- Press and hold  (RETURN) ( p. 33).
- You can also stop from the menu ( p. 33).
- The printing for the paper currently being printed will be completed and subsequent printing is halted.



To return to the “Menu” screen

- ① Press  (RETURN).
- ② If the screen shown to the right is displayed, press  to select [Yes] and press  (OK).



Note

- The preview is not exact print image. Actual printouts may differ from the preview.
- The yellow border surrounding images is not printed.
- Settings in the [Print Settings] (p. 39 – 44) are not applied when printing a calendar.
- To adjust the image quality while creating a calendar, select [Settings] → [Image Adjustment] on the “Menu” screen (p. 53, “Saving Printer Settings”).
- [Image Adjustment] settings can be made only for images while creating a calendar.

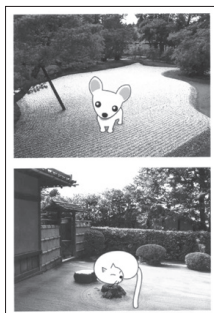
Composite Printing **N**



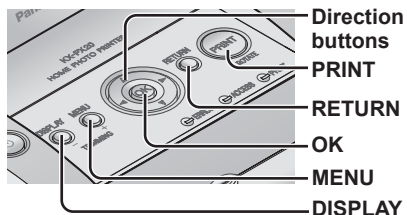
This function is available in “Normal mode” only. Switch to “Normal mode” (👉 p. 29).

You can create composite images by adding a frame and clip art.

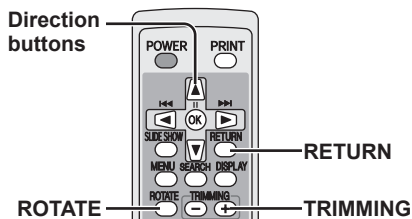
Do not change the paper size during operations. Otherwise, printing will be impossible.



• Printer



• Remote control





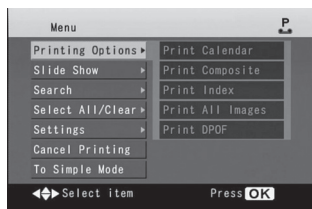
Same operations are also possible using the remote control. (For the button names on the remote control, refer to page 13.)

1



Select frame.

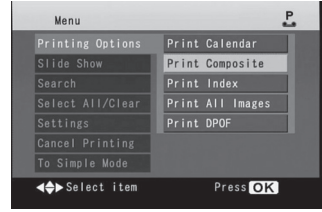
1 Press  (MENU).

2 Press  to select [Printing Options] and press  (OK).





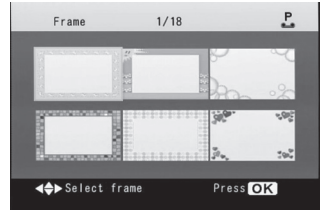
3

Press  to select [Print Composite] and press  (OK).





4

Press  to select the desired frame and press  (OK).

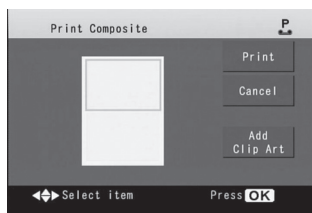







2 Select image.

1 Press  to select the image insert position and press  (OK).





- The selected image position is outlined with a yellow border.



2 Press  to select an image and press  (OK).

- To switch to "Single-Shot View" display, press  (DISPLAY).





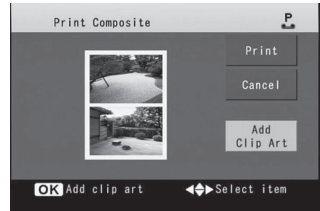
3 Edit the image using  (Reduce/Enlarge),  (Rotate),  (Move) and press  (OK).



- The image during editing is outlined with a blue border.







3 Add clip art.

- 1 Press  to select [Add Clip Art] and press  (OK).
- Up to 8 clip art can be applied.




- 2 Press  to select clip art and press  (OK).



- 3 Edit the clip art using  (Reduce/Enlarge),  (Rotate),  (Move) and press  (OK).



- The clip art during editing is outlined with a blue border.
- When you press  (OK), the border for the clip art will disappear.








4 Print.




Press  (PRINT).

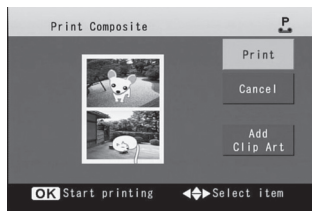
Or press  to select [Print]

and press  (OK).




- Printing begins.
Then the display will return to the screen shown to the right.
- If you press  to select [Cancel] and press  (OK), the screen ( p. 79) will be displayed.
- 1 If you press  to select [Yes] and press  (OK), the display will return to the "Menu" screen and changes will be cleared.

● To stop print job midway

- Press and hold  (RETURN).
( p. 33)
- You can also stop from the menu.
( p. 33)
- The printing for the paper currently being printed will be completed and subsequent printing is halted.



To return to the “Menu” screen

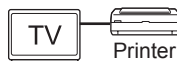
- ① Press  (RETURN).
- ② If the screen shown to the right is displayed, press  to select [Yes] and press  (OK).



Note

- The preview is not exact print image. Actual printouts may differ from the preview.
- The yellow border surrounding images is not printed.
- Settings in the [Print Settings] (p. 39 – 44) are not applied when printing a composite image.
- To adjust the image quality while creating a composite image, select [Settings] → [Image Adjustment] on the “Menu” screen (p. 53, “Saving Printer Settings”).
- [Image Adjustment] settings can be made only for images while creating a composite image.

Printing with a TV



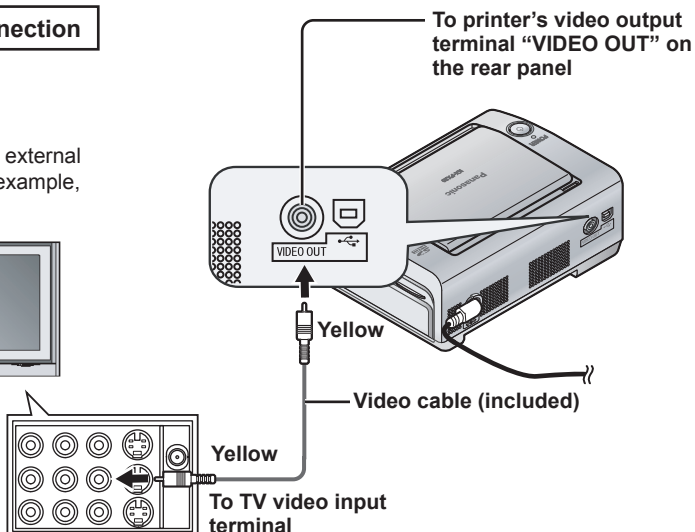
You can operate the printer while viewing a TV screen by connecting the printer to a TV.

Methods used for operating the printer and displaying contents are exactly the same as when you use the LCD monitor.

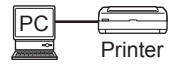
However, the TV screen will remain on even if the LCD monitor is turned off using the "Sleep" feature (p. 52).

Sample connection

Switch the TV to external input mode (for example, "VIDEO IN").



Printing with a Computer



You can perform printing operation on a computer.

After installing the printer driver (☞ p. 82 – 85), perform print operations using image printing software.

Ensure that your computer's configuration is compatible for use with this printer (☞ table below).

Download the latest printer driver from the website

(<http://panasonic.co.jp/pcc/cs/en/telecom/printer/download.htm>).

System requirements

Computer	IBM® PC/AT® compatible
CPU	Intel® Pentium® II processor or Celeron® 500 MHz or higher
OS	Microsoft® Windows® 98 Second Edition※1 Microsoft® Windows® Me※2 Microsoft® Windows® 2000 Professional※3 Microsoft® Windows® XP Home Edition/Professional※4
Memory	Windows Me/Windows 98 SE: 64 MB or above (128 MB minimum recommended) Windows XP/Windows 2000: 128 MB or above (256 MB minimum recommended)
Required Hard Disk Space	120 MB minimum
Display	High Color (16 bit) or higher Desktop area 800 x 600 pixels or higher
Interface	USB port
Disc Drive	CD-ROM drive (required for installation)
Other	Mouse or equivalent device

- Operation is not necessarily guaranteed with the above environments.
 - Operation is not guaranteed on Macintosh® Computers.
 - Operation is not guaranteed on Windows 3.1, Windows 95, Windows 98 or Windows NT® environments.
 - Operation is not guaranteed with operating system upgrades.
 - Not compatible with multi-CPU configured environments.
 - Compatible with Windows XP SP1 or SP2 environments.
- ※1 Microsoft® Windows® 98 Second Edition operating system (hereafter Windows 98 SE)
- ※2 Microsoft® Windows® Me operating system (hereafter Windows Me)
- ※3 Microsoft® Windows® 2000 Professional operating system (hereafter Windows 2000)
- ※4 Microsoft® Windows® XP Home Edition/Professional operating system (hereafter Windows XP)

Important

- Do not play the supplied CD-ROM on an audio CD player. Doing so may emit loud sound resulting in damage to the speaker.
- Do not connect more than 2 Panasonic home photo printers to a computer.



Installing the printer driver

To print from the computer, you must first install the printer driver to your computer as follows. For details on printer driver operations, see the printer driver's help.

Important

- Do not connect the printer to a computer before installing the printer driver. Also, be sure to turn off the printer's power before making connections.
- When the "Found New Hardware Wizard" screen appears during the installation, click [Cancel] on the screen.
- Quit all other active applications.
- Once you have installed the printer driver, do not shut down or log off your computer while printing is in process. Doing so prevents the printer from printing properly.
- To insure against data loss or deletion of any data, ensure that you make a backup copy of the software contained on the CD-ROM.
- For Windows XP and Windows 2000, log on as system administrator or have a similar level of authorization to install the printer driver.

The following descriptions are intended for Windows XP.

The displayed messages and procedures may vary slightly depending on the OS.

1 Start the computer and insert the supplied CD-ROM.

- The menu screen is displayed.

• If the menu screen is not displayed...

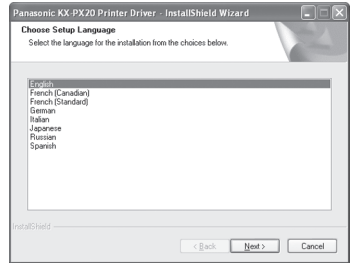
1. Open [My Computer].
2. Open the CD-ROM drive and double-click [Setup.exe] on the CD-ROM.

2 Click [KX-PX20 Printer Driver] on the menu screen.



3

Select the language for the installation.



4

Click [Next].

- When the screen displaying the message "Before setup, make sure the printer is off." appears, click [OK].



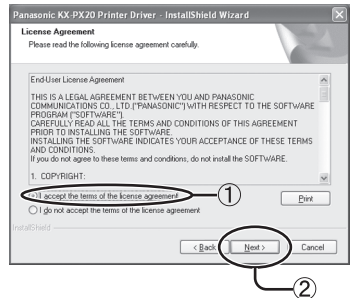
5

Read the License Agreement

(p. 87) carefully.

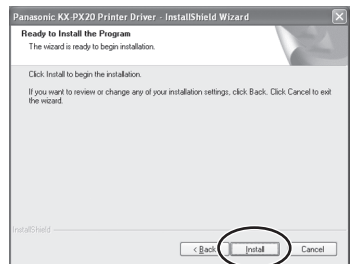
Select ① [I accept the terms of the license agreement] and click ② [Next].

- If you do not agree to the conditions of the license agreement, click [Cancel]. The installation process will be discontinued.



6

Click [Install].



Printing with a Computer (continued)



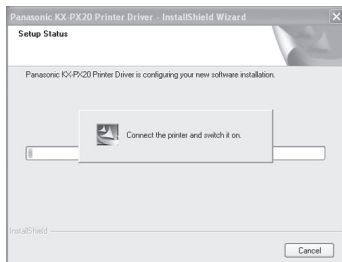
Connect the printer to the computer with the USB cable when “Connect the printer and switch it on.” screen is displayed.

Then turn the printer on.

7 (☞ p. 85)

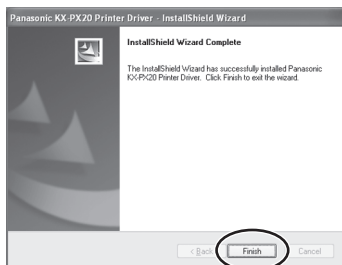
- **If “Printer not found. Check the connection.” screen is displayed**

Make sure that the USB cable is connected properly and the printer is turned on, and then click [Retry].



Click [Finish].

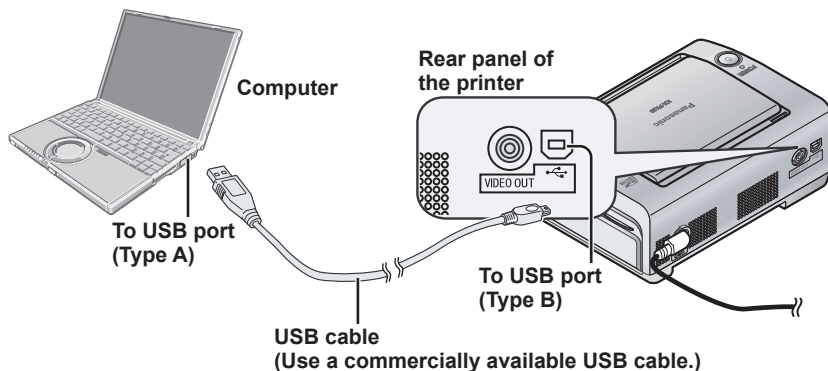
8



The installation process has completed.

• Connecting with a personal computer

Sample connection



Warning:

To assure continued emission limit compliance, use only shielded USB cable (2 m (6.5') or less in length).

• Uninstalling the printer driver

Use uninstall if you want to delete the printer driver.

Disconnect the USB cable before uninstalling the printer driver.

Quit all other active applications.

- ① Select [Start] → [All Programs (Programs)] → [Panasonic] → [Panasonic KX-PX20] and then click [Uninstall].
 - ② Click [Yes] when "Do you want to completely remove the selected application and all of its features?" screen appears.
 - ③ Select [Yes, I want to restart my computer now.] and click [Finish].
- After the computer has restarted, the driver is uninstalled.

Note

- Operation is not guaranteed when printing over a network.
- Operation is not guaranteed when the printer is connected via a USB hub.



Printing from the computer

Use the application software installed on your computer to print images from the computer. Refer to the application software's operating instructions for details on the printing operation.

1 Open the image file to be printed using the application software.

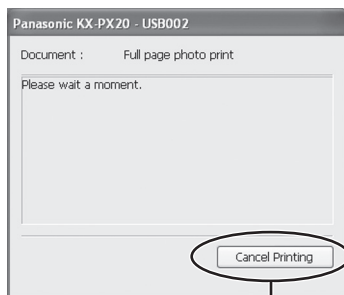
2 Print the image file.

- Make sure that printer paper size setting on the application software matches the size of the paper and ink cassette in the printer. If the different size paper is selected on the application software, printing will become impossible.
- A status monitor window (see below) is displayed during printing.

Status monitor

When attempting to print from application software, a status monitor showing the progress of the current print job will be displayed. The status monitor will not be displayed under the following conditions:

- When you have selected a different printer
⇒ Select this printer.
- When there are still previously initiated active print jobs remaining in the print queue
⇒ Delete any unwanted print jobs.



Click this button when you want to stop printing.

• Deleting unwanted print jobs

- For Windows XP:
Select [Start] → [Control Panel] → [Printers and Other Hardware] → [Printers and Faxes] and then double-click the icon for this printer. Select the unwanted print jobs and press the Delete key.
- For Windows 2000/Me/98 SE:
Select [Start] → [Settings] → [Printers] and then double-click the icon for this printer. Select the unwanted print jobs and press the Delete key.

Important

Do not shut down or log off your computer while printing is in process. Doing so prevents the printer from printing properly.

License agreement

Please read the following license agreement carefully.

End-User License Agreement

THIS IS A LEGAL AGREEMENT BETWEEN YOU AND PANASONIC COMMUNICATIONS CO., LTD. ("PANASONIC") WITH RESPECT TO THE SOFTWARE PROGRAM ("SOFTWARE"). CAREFULLY READ ALL THE TERMS AND CONDITIONS OF THIS AGREEMENT PRIOR TO INSTALLING THE SOFTWARE. INSTALLING THE SOFTWARE INDICATES YOUR ACCEPTANCE OF THESE TERMS AND CONDITIONS.

If you do not agree to these terms and conditions, do not install the SOFTWARE.

1. COPYRIGHT:

The SOFTWARE is protected by copyright laws and international treaty provisions, and all other applicable laws. You acknowledge that you are receiving only a LIMITED LICENSE TO USE the SOFTWARE and related documentation, and that you shall obtain no title, ownership nor any other rights in or to the SOFTWARE and its related documentation, all of which title and rights shall remain with PANASONIC or its licensor.

2. LICENSE:

- (1) You may use the SOFTWARE solely for the purpose of operation of your Panasonic Printer which is compatible with the SOFTWARE.
- (2) You may make a copy of the SOFTWARE for the use defined in subparagraph (1) above, or for internal back-up purpose only.
- (3) You may transfer your rights under this License Agreement on a permanent basis, provided that you transfer this Agreement, all copies of the SOFTWARE, all related documentation and your Panasonic Printer, and the recipient thereof agrees to the terms of this Agreement.

3. RESTRICTIONS:

You may not reverse engineer, decompile or disassemble the SOFTWARE, except as expressly permitted by applicable laws. You may not use, copy, modify, alter, rent, lease or transfer the SOFTWARE, its related documentation, or any copies thereof, in whole or in part, except as expressly provided in this Agreement. You may not export the SOFTWARE in contravention of any applicable U.S. or foreign export laws and regulations.

4. TERM:

This license is effective until terminated. You may terminate this Agreement at any time by destroying the SOFTWARE and related documentation and all copies thereof. This license will be terminated if you fail to comply with any term or condition of this Agreement. Upon such termination, you agree to destroy the SOFTWARE, all copies thereof and related documentation.

5. LIMITATION OF LIABILITY:

THE SOFTWARE IS PROVIDED "AS IS" WITHOUT ANY WARRANTY. PANASONIC (INCLUDING MATSUSHITA ELECTRIC INDUSTRIAL CO., LTD. AND ITS AFFILIATE COMPANIES, IN THIS ARTICLE) DOES NOT MAKE OR PASS ON TO YOU OR OTHER THIRD PARTY, ANY WARRANTY OR REPRESENTATION INCLUDING, BUT NOT LIMITED TO, THE IMPLIED WARRANTIES OF MERCHANTABILITY AND FITNESS FOR A PARTICULAR PURPOSE. WITHOUT LIMITING THE GENERALITY OF THE FOREGOING, PANASONIC DOES NOT WARRANT THAT THE SOFTWARE WILL BE ERROR-FREE OR THAT IT WILL MEET YOUR REQUIREMENTS. PANASONIC SHALL NOT BE LIABLE FOR ANY DAMAGE SUFFERED BY YOU INCLUDING, BUT NOT LIMITED TO, CONSEQUENTIAL, INCIDENTAL, SPECIAL OR PUNITIVE DAMAGES, EVEN IF PANASONIC HAS BEEN ADVISED OF THE POSSIBILITY OF SUCH DAMAGES. NOTWITHSTANDING THE FOREGOING, IF THE TERMS AND CONDITIONS HEREOF CONTRADICT THE LAWS OF THE JURISDICTION IN WHICH YOU LIVE, THIS LICENSE AGREEMENT SHALL BE MODIFIED TO THE EXTENT SUCH LAWS REQUIRE.

If a Paper Jam Occurs

The error message "Paper is jammed." is displayed on the TV screen or status monitor of the computer screen.

1

Turn off the printer's power once and turn it back on again with both the paper cassette and ink cassette still inserted.

- Jammed paper will be ejected from the front panel ① or the rear panel ②. (Paper may be ejected from both the front panel ① and the rear panel ②.)

2

Remove the paper from the front panel ① or rear panel ②.

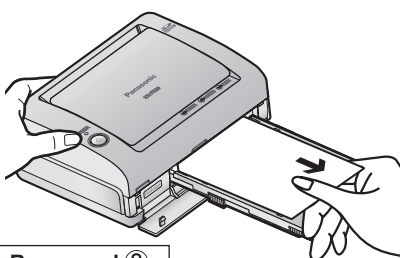
3

Remove the ink cassette to verify that there is no more paper lodged inside the printer.

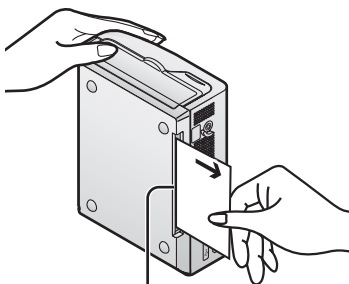
4

Replace the ink cassette.

Front panel ①



Rear panel ②

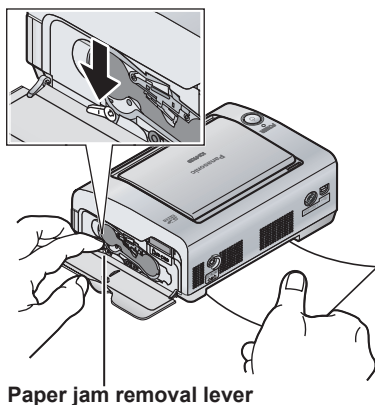


Opening for removing paper jams

If paper is not ejected

1 Turn off the power and remove the paper cassette.

2 Remove the paper from either the front panel ① (➡ p. 88) or the rear panel ② (➡ p. 88) while pressing down on the paper jam removal lever.



Important

If the paper has stopped moving and no error message appears, wait for a while, leaving the paper as it is. When the atmospheric temperature is high or when continuous printing has been performed, printing operations may temporarily halt in order to keep the internal temperature of the printer from rising. Printing will automatically resume when the internal temperature of the printer goes down.

Note

When printing from a computer, printing sometimes continues after jammed paper is removed.

LED Indicators

The operational and error status of the printer is displayed using a combination of lit and blinking LED indicators. Messages can be displayed on the LCD monitor, TV screen, and the status monitor of the computer screen (p. 98 – 101).

When operations are normal

Status	POWER lamp	ERROR lamp	ACCESS lamp	PRINT lamp
Power is off (Standby mode)	Lit (Red)	Off	Off	Off
Power is on	Lit (Green)	Off	Off	Off
The LCD monitor is sleeping	Blink (Green)	Off	Off	Off
Loading image	Lit (Green)	Off	Lit/Blink (Green)	Off
Printing	Lit (Green)	Off	Off	Blink (Green)
Waiting to print※1 (when temperature is too high or too low)	Lit (Green)	Off	Off	Lit (Green)
Connecting to or disconnecting from a PictBridge compatible device.	Lit (Green)	Off	Lit/Blink (Green)	Off

※1 When temperature is too high or too low, the printer will temporarily enter Waiting mode (p. 10).

When an error occurs (For details, refer to page 98 – 101.)

Status	POWER lamp	ERROR lamp	ACCESS lamp	PRINT lamp
Paper/ink error	Lit (Green)	Lit (Red)	Off	Off ※2
Paper jam	Lit (Green)	Blink (Red)	Off	Off
Internal printer error	Blink (Red)	Blink (Red)	Off	Off
Connecting to a device incompatible with PictBridge.	Lit (Green)	Blink (Red)	Off	Off

※2 Sometimes the PRINT lamp blinks or lights up during printing.

Troubleshooting

Follow the procedures described below. If you are not able to solve the problem, contact your dealer.

Power source

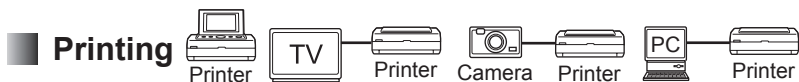
Problem	Cause and Remedy	Page
The power is not on.	<ul style="list-style-type: none">• Are the power cord and AC adaptor connected correctly? ⇒ Connect the power cord and AC adaptor correctly.	14
The power is not off.	<ul style="list-style-type: none">• Press the POWER button for approximately 1 second. The POWER lamp lights up in red. (Standby mode)	25
	<ul style="list-style-type: none">• When the printer is in sleep mode or when the message is displayed on the LCD monitor, the power is not turned off, even if the POWER button has been pressed. ⇒ Now that sleep mode is off, press the POWER button again for approximately 1 second. Once the message is displayed, press the POWER button once more for approximately 1 second after dealing with the message.	52

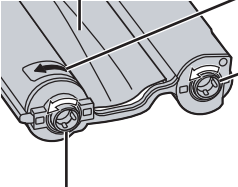
LCD monitor

Problem	Cause and Remedy	Page
The LCD monitor is turned off although the printer is turned on.	<ul style="list-style-type: none">• When "Sleep" is set to [10min] or [5min], the LCD monitor is automatically turned off if the printer has not been used for the time selected. ⇒ Press any button to resume operations.※1	52
Some pixels are inactive or always lit on the LCD monitor.	<ul style="list-style-type: none">• This is not a malfunction. These pixels do not affect printing.	11
Noise appears on the LCD monitor.	<ul style="list-style-type: none">• In dark places, noise may appear to maintain the brightness of the LCD monitor. This does not affect printing.	—

※1 To resume with the POWER button, press the POWER button for approximately 1 second.

Troubleshooting (continued)



Problem	Cause and Remedy	Page
<p>The ink cassette cannot be inserted.</p>	<ul style="list-style-type: none"> • When attaching the ink cassette, if it does not catch in place when inserted, manually rotate the ink sheet reel slightly as described below and try again. <div style="display: flex; align-items: center;"> <div style="margin-right: 10px;"> <p>Ink sheet</p>  </div> <div> <p>① Make sure that the side of the ink cassette with an arrow symbol is facing upward.</p> <p>② Rotate the reel on this side approximately 90 degrees in the direction of the arrow and allow the ink sheet to slacken slightly.</p> <p>③ Rotate the reel on the other side in the direction of the arrow to take up the slack of the ink sheet.</p> </div> </div>	<p>—</p>
<ul style="list-style-type: none"> • Not able to print. • Blank paper comes out. 	<ul style="list-style-type: none"> • Have you inserted the ink cassette as far as it will go? ⇒ Insert the ink cassette all the way in. • Does the ink sheet have slack? ⇒ Flatten out the ink sheet. • Have you inserted the paper cassette as far as it will go? ⇒ Insert the paper cassette all the way in. • Does the size of paper and ink cassette match? ⇒ Make sure that the paper and ink cassette sizes match. • Have you been printing continuously or printing when the room temperature is high? ⇒ Printing operations may temporarily halt in order to keep the internal temperature of the printer from rising. The PRINT lamp will change to lit status at this time. This is not a malfunction. Please wait until the internal temperature of the printer goes down. • Has the ink in the ink cassette run out? ⇒ Replace the ink cassette. 	<p>20</p> <p>20</p> <p>19</p> <p>16</p> <p>10</p> <p>90</p> <p>20</p>
<p>Printing time is unusually long.</p>	<ul style="list-style-type: none"> • Printing will require additional time when printing more than 2 sheets in succession or when the surrounding temperature is high. 	<p>10</p>
<p>There is a noise during printing.</p>	<ul style="list-style-type: none"> • The printer makes noise when the ink and paper are being fed out during printing. This is normal. 	<p>—</p>

Problem	Cause and Remedy	Page
The printer printed a different number of copies than selected.	• Even if the number of copies has been set to each image when selecting images, only one copy will be printed if “All Images” or “ Index” is selected.	34 35
	• When printing using DPOF settings, only the number of copies set by DPOF will be printed.	37
<ul style="list-style-type: none"> • Unsatisfactory print quality • Horizontal lines appear across the printed image. 	• Are you using different paper than that which is indicated? ⇒ Insert the paper exclusive for this printer.	16
	• Does the ink sheet have slack? ⇒ Flatten out the ink sheet.	20
	• Have you inserted the paper with the wrong side facing up? ⇒ Make sure that you insert the paper with the print side (glossy surface) facing up.	18
	• Print quality may be poor if there is condensation ^{※2} due to a difference in temperatures. ⇒ Wait for approximately 2 hours from the time the printer’s power was turned on before attempting to resume printing.	93
	• Are the thermal heads dirty? ⇒ Clean the thermal heads ^{※3} .	94
<ul style="list-style-type: none"> • Paper jams occur frequently. • Paper does not feed. 	• Have you loaded more than 18 sheets of paper (or more than 20 sheets of wide size paper) in the paper cassette? ⇒ Reduce the number of sheets.	18
	• Have you inserted curled paper? ⇒ Do not use curled paper.	—
	• Is the feeding stop adjusted according to the paper size you want to use? ⇒ Adjust the feeding stop.	18
Part of the printed image is cut off.	• Have you used application software to enlarge the image beyond the printing range of this printer? ⇒ Reduce the image size so that it fits within the printer’s printing range.	—
	• Is [Borders] of the digital camera or printer driver ^{※4} set to [OFF]? ⇒ Select [ON] under [Borders].	—
There is an unexpected margin on the printed images.	• Is [Borders] of the digital camera or printer driver ^{※4} set to [ON]? ⇒ Select [OFF] under [Borders].	—

※2 Condensation

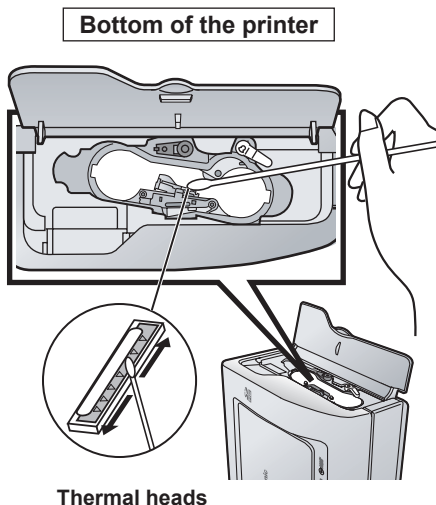
Water droplets will form after a bottle has been removed from a refrigerator during the summer season or in a warm environment. This formation of water droplets is called condensation. Condensation that forms on printed paper and the printer roller and that has not yet dried may cause smudging on the printed image.

Troubleshooting (continued)

※3 Cleaning thermal heads

If photo images are marred by horizontal lines and you are not able to print high-quality photo images, use a commercially available cotton swab, approximately 15 cm (6") in length, to clean the full length of the thermal heads in the ink cassette slot.

- Do not clean the thermal heads immediately after printing.
- Disconnect the power cord and remove the ink cassette before cleaning the thermal heads.
- Do not insert your fingers in the ink cassette slot while cleaning the thermal heads as this may lead to injury.



※4 Printer driver

For operation details, see the help on the supplied CD-ROM.



Problem	Cause and Remedy	Page
The display areas on the LCD monitor and the TV screen are different.	<ul style="list-style-type: none"> • With some TV models, the display area is smaller so the top and bottom or left and right of the image may appear cut off when the image is displayed. This is not a malfunction. 	—
The brightness and color tones of the preview image on the LCD monitor and the TV screen are different from the ones of the printed pictures.	<ul style="list-style-type: none"> • The preview image is not exact print image, just for your reference. Therefore, there may be some differences in the quality of the image on the LCD and/or TV and the printed image. This is not a malfunction. 	—
Cannot stop printing job by pressing and holding the RETURN button.	<ul style="list-style-type: none"> • You cannot stop printing job by pressing and holding the RETURN button while the message is displayed. Retry after the message is disappeared. 	33

Problem	Cause and Remedy	Page
<p>The message "The monitor is entering sleep mode following the set period of inactivity. Press any button to resume operations." is shown on the LCD monitor and the TV screen.</p>	<ul style="list-style-type: none"> When "Sleep" is set to [10min] or [5min], this message is displayed if the printer has not been used for the time selected. The message is cleared by pressing any button.※1 The LCD monitor is automatically turned off 1 minute after this message is displayed. 	—
<ul style="list-style-type: none"> Printer does not operate when the button is pressed. The menu is not displayed even when the MENU button is pressed. 	<ul style="list-style-type: none"> Has the printer unit become hot? ⇒ If the inside of the unit becomes hot, buttons may stop functioning and the printer may stop midway through printing. If this happens, the PRINT lamp will light. This is not a malfunction. Please wait for the temperature to go down. 	10 90
<p>No image is displayed.</p>	<ul style="list-style-type: none"> Have you inserted the memory card correctly? ⇒ Insert the memory card correctly. Have you inserted a memory card that is not compatible with this printer? ⇒ Check that the format of the memory card is compatible with the printer. 	24 103
<p>The image on the TV is not displayed clearly.</p>	<ul style="list-style-type: none"> Are the printer and the TV connected correctly? ⇒ Connect the printer and the TV correctly. 	80

Troubleshooting (continued)

Problem	Cause and Remedy	Page
It takes considerable time for the image to be displayed.	<ul style="list-style-type: none"> It may take some time until the image is displayed, depending on the image format or size of the image. This is not a malfunction. 	—
It takes considerable time for the initial screen to be displayed.	<ul style="list-style-type: none"> Do you have many images stored on the memory card? ⇒ It may take some time until the image is displayed. This is not a malfunction. 	—
The image is distorted.	<ul style="list-style-type: none"> Is the printer located close to any devices that may be emitting electric waves or magnetic waves? ⇒ Make sure the printer is not set close to any game devices, stereo speakers or large format monitors, etc. 	10
The remote control does not work.	<ul style="list-style-type: none"> Are there any obstacles between the printer and the remote control? ⇒ Remove any obstacles that may be in the way. Are you pointing the remote control at the remote control receiver on the printer? ⇒ Make sure that you are aiming the remote control at the printer's remote control receiver. Is the battery used up? ⇒ Replace the battery with new one. 	15 15 14



Problem	Cause and Remedy	Page
<ul style="list-style-type: none"> Don't know how to stop the printing process when printing from a computer. Printing has started after starting the computer. 	<ul style="list-style-type: none"> Click [Cancel Printing] on the status monitor. Select [Start] → [Printers and Faxes] (or [Start] → [Settings] → [Printers]) and then double-click the icon for this printer. Then select [Printer] → [Cancel All Documents] (or [Purge Print Documents]). 	86 —
<ul style="list-style-type: none"> Cannot start printing from the computer. ERROR lamp on the printer is lit or blinking when printing from the computer. 	<ul style="list-style-type: none"> Check the information displayed on the status monitor. 	86 98 99

Problem	Cause and Remedy	Page
<p>The printed image has poor tone balance.</p>	<ul style="list-style-type: none"> You can adjust the image quality on the [Image Adjustment] tab of the printer driver※4. 	—
<ul style="list-style-type: none"> The printed image is too bright. There is too much image noise in the dark areas of the printed image. 	<ul style="list-style-type: none"> Changing [Auto Mode] setting to [OFF] on the [Image Adjustment] tab of the printer driver※4 may improve these problems. 	—
<p>A message indicating “The USB port cannot be located” is displayed on the computer.</p>	<ul style="list-style-type: none"> Have you connect the printer to USB port that supports printers? ⇒USB ports are displayed as [USB001] and [USB002]. Check the USB port configuration. <p>Checking method</p> <ul style="list-style-type: none"> For Windows XP Select [Start] → [Control Panel] → [Printers and Other Hardware] → [Printers and Faxes] and open [Properties] window for this printer. Select USB ports on [Ports] tab. For Windows 2000 Select [Start] → [Settings] → [Printers] and open [Properties] window for this printer. Select USB ports on [Ports] tab. For Windows 98 SE/Me Select [Start] → [Settings] → [Printers] and open [Properties] window for this printer. Select USB ports on [Print to the following port] on [Details] tab. 	—





※4 Printer driver

For operation details, see the help on the supplied CD-ROM.

Message Display

Paper cassette and ink cassette related messages

LED indicators

POWER lamp	ERROR lamp	ACCESS lamp	PRINT lamp
 Lit (Green)	 Lit (Red)		 ※1

※1 Sometimes the PRINT lamp blinks or lights up during printing.





Messages

Message	Remedy	Page
Load a new ink cassette. Ink Cassette: xx※2 (U02/U03/U04)	<ul style="list-style-type: none">Replace with a new ink cassette as ink has run out.	20
Load the ink cassette. Ink Cassette: xx※2 (U12/U13/U14)	<ul style="list-style-type: none">Insert an ink cassette that matches the ink cassette shown in the message.	20
Load paper. Paper Size: xx※2 (UA0/UA1/UA2)	<ul style="list-style-type: none">Load the paper of the size shown in the message into the paper cassette.	18
Load the paper cassette. Paper Size: xx※2 (UA3/UA4/UA5)	<ul style="list-style-type: none">Insert the paper cassette of the size shown in the message.	19
Incorrect ink cassette size. Ink Cassette: xx※2 (U43/U44/U45)	<ul style="list-style-type: none">Insert the ink cassette of correct size.	16

※2 "P" or "W" will appear in place of xx. (P: Postcard size, W: Wide size)

Paper size error/Paper jam

LED indicators





POWER lamp	ERROR lamp	ACCESS lamp	PRINT lamp
 Lit (Green)	 Blink (Red)		

Messages

Message	Remedy	Page
Paper is jammed. Check the paper and the paper cassette. (U2E/U28)	<ul style="list-style-type: none"> Remove the jammed paper. 	88
Paper has been ejected behind the printer. Check the paper and the paper cassette. (UBA/UBB/UBC/UBD/UBE/U62/U63/UB0/UB1/UB2/UB9)	<ul style="list-style-type: none"> Paper is ejected from the front panel or rear panel of the printer. (Sometimes paper may be ejected from both.) Remove the paper. Then, remove the paper cassette once and re-insert. Make sure that the paper and ink cassette sizes match. 	—
Check the paper and the paper cassette. (UB3 - UB8)		18

Internal error

LED indicators

POWER lamp	ERROR lamp	ACCESS lamp	PRINT lamp
 Blink (Red)	 Blink (Red)		

Messages

Message	Remedy	Page
An error has occurred. Unplug/replug the power cord, then repower the unit. (Fxx^{※3})	<ul style="list-style-type: none"> An internal hardware error has occurred. Unplug the AC adaptor from the power supply once, reconnect, and turn the unit on again. If the error has not cleared, please consult your dealer. 	—

※3 Numbers and/or letters will appear in place of xx.

Message Display (continued)

Others

- **LED indicators:** No special indication.

Messages

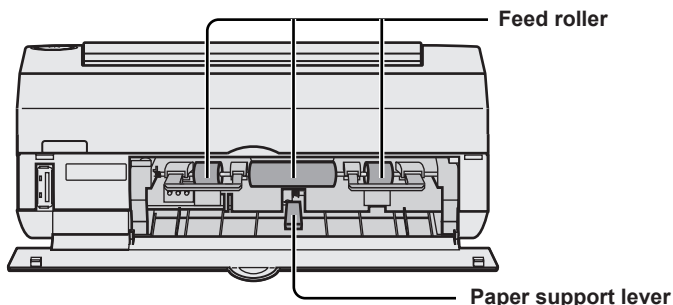
Message	Remedy	Page
Maximum number of copies exceeded. Print after this job.	<ul style="list-style-type: none"> • Up to 99 copies can be printed at once. Perform the print operation again after current print job is finished. • Up to 10 copies can be printed at once when printing a calendar or composite image. Perform the print operation after the current print job is finished. 	32
		67
		74
Maximum number of copies exceeded. Select the first image to print. Print xx photos. ※ A number (1 to 99) will appears in place of xx.	<ul style="list-style-type: none"> • Up to 99 copies can be printed at once. Select the print (select) start image. Images beginning from the selected one up to the 99th will be printed (selected). • When you print an index Up to 10 copies can be printed at once. Select the print start image. Images beginning from the selected one up to the 250th (300th for wide size paper) will be printed. 	34
		35
Maximum number of copies exceeded. Select the first image to print. xx images selected. ※ A number (1 to 99) will appears in place of xx.		58
Print all images after the current print job.	<ul style="list-style-type: none"> • The operations print all images, print index, DPOF print, and select all images cannot be executed during printing. Retry the desired operation after the current print job is finished. 	34
Print the index after the current print job.		35
Print the DPOF job after the current print job.		37
Select all images after the current print job.		58
<ul style="list-style-type: none"> • Unable to display or print this image. (U3C) • Unable to print. Cancelling the print job from the SD card or Multimedia card. (U3E) 	<ul style="list-style-type: none"> • The image you attempted to print has an unsupported format or is broken. • Blank paper may come out instead of printed images. 	103
		—

Message	Remedy	Page
<p>No SD card or Multimedia card. (U35)</p>	<ul style="list-style-type: none"> • Insert a memory card. 	24
<ul style="list-style-type: none"> • Unable to use this SD card or Multimedia card. (U36) • Unable to read the SD card or Multimedia card. Cancelling the print job from the SD card or Multimedia card. (U38) • Unable to read the SD card or Multimedia card. (U39) 	<ul style="list-style-type: none"> • You are using a memory card that is not compatible. Memory cards formatted by a computer may not be able to be used. Be sure to use memory cards formatted by a digital camera. 	103

Maintenance

- **When the feed roller and/or paper support lever are dirty**

Clear prints may become impossible if the feed roller or paper support lever become dirty.



Wipe clean with a damp cloth that has been wrung thoroughly.

- **Wiping the printer surface**

To clean the printer surface, wipe up any dust with a soft dry cloth. If the printer is particularly dirty, soak the cloth in kitchen detergent (neutral) diluted with water and wring the cloth out thoroughly. Then wipe off the dust with the cloth and wipe again with a dry cloth. When using a chemical cleaning cloth, follow the precautions outlined in the guideline instructions.

- **Air vents**

If dust enters from the air vents, it can accumulate on the ink sheet compromising print quality.

As dust builds up, the printer's air vents can be blocked, which could hamper safe operation of the printer. (☞ p. 6, "Important Safety Instructions")

If this occurs, remove the ink cassette and clean the dust off the ink sheet using a vacuum cleaner.

Specifications

Power Source	AC adaptor Input voltage: 100 V to 240 V AC \pm 10 % 50/60 Hz Rated output: 24 V DC, 1.8 A
Power Consumption	During printing: Approx. 72 W When the power lamp is lit in green: Approx. 8 W When the power lamp is lit in red: Approx. 1.5 W
Printing System	Dye-Sublimation Thermal Transfer
Printing Speed ^{※1}	Postcard size: Approx. 65 sec./sheet Wide size: Approx. 75 sec./sheet
Ink Sheet	Cassette System (exclusive) (yellow, magenta, cyan and overcoat)
Printing Paper	Postcard size: 101 mm x 180 mm (3.98" x 7.09") (After cutting: 101 mm x 152 mm (3.98" x 5.98")) Wide size: 101 mm x 208 mm (3.98" x 8.19") (After cutting: 101 mm x 180 mm (3.98" x 7.09"))
Paper Feed Method	Automatic paper feed system (holds 18 sheets of postcard size paper, or 20 sheets of wide size paper)
Image Quality	256 levels/color
Printing Resolution	300 x 300 dpi
Number of Images Displayable	Maximum of 20,000
Maximum Pixels of Image	6144 x 4096 pixels
Print Head	Thermal
Input Terminal	PictBridge: PictBridge terminal (front panel: 1) For personal computer: USB port (Type B) (rear panel: 1)
Output Terminal	Video: RCA pin jack (rear panel: 1) 1.0 Vp-p, 75 ohms
Compatible Memory Card	SD Memory Card, SDHC Memory Card, MultiMediaCard, miniSD Memory Card (adaptor required) Image formats: <ul style="list-style-type: none"> • JPEG baseline (SD-Picture, DCF (Design rule for Camera File system), Exif, JFIF) • TIFF (uncompressed) (conforms with Baseline TIFF Rev. 6.0 RGB Full Color Images) You cannot print TIFF format images from PictBridge devices such as digital cameras.
LCD Monitor	3.6" IPS-TFT LCD (Approx. 230,000 pixels) (Approx. 16,000,000 colors)

※1 This is the time required from the start of printing the yellow layer to the end of printing the overcoat. The printing speed given is approximate and may change depending on the temperature.

Specifications (continued)

Allowable Temperature	Storage: -20 °C to 55 °C (-4 °F to 131 °F) Operation: 5 °C to 35 °C (41 °F to 95 °F)
Allowable Humidity	Storage: 0 % to 90 % Operation: 35 % to 80 %
External Dimensions	Approx. 173 (W) x 69 (H) x 131 (D) mm (Approx. 6.81" (W) x 2.72" (H) x 5.16" (D)) (excluding protruding parts)
Mass	Approx. 1,050 g (2.31 lbs) (main unit)

- This product conforms with the Design rule for Camera File system (DCF) and Exif2.21 (Exif Print) image format as defined by the Japan Electronics and Information Technology Industries Association (JEITA).

List of Factory Settings

	Item	Factory setting
Print Settings	Date	OFF
	Borders	OFF
	LUMIX Date	OFF
Image Adjustment	Effect	OFF
	Auto Mode	Auto
	Density/Balance	OFF
	Color Levels	OFF
	White Balance	OFF
Print Calendar	Start Year/Month	2007. 1.
	Start Day	Sunday
Device Settings	Date Format	MM/DD/YY
	Language	English
	Sleep	10min
	Display by	Date
	TV Aspect	4:3
Slide Show Settings	Interval	5 seconds
	Pattern	Normal
	Operation Guide	ON
Operation Mode	—	Simple Mode

Note

- The above settings are saved when the power is turned off normally by pressing the POWER button.
- For [Print Settings], [Image Adjustment], and [Device Settings] only those settings which have been changed using the procedures in "Saving Printer Settings" (p. 53) are saved.
- To restore factory default settings, refer to page 54.

Additional Information

■ Compatible Standards

Exif Printing

- This product conforms with the Exif2.21 (Exif Print) image format as defined by the Japan Electronics and Information Technology Industries Association (JEITA). (Using the digital camera's photo information helps provide an extremely high-quality image print.)

PictBridge

- This product conforms with the PictBridge (CIPA DC-001-2003) standard adopted by the Camera & Imaging Products Association (CIPA). (PictBridge is a standard that enables direct printing from a digital camera to the printer and is not limited to a specific manufacturer. Digital video cameras also adopt this standard.)

The logo for Exif Print, featuring the words "Exif Print" in a stylized, italicized font. Above the word "Exif" are several small dots arranged in a semi-circular pattern, suggesting a lens or a camera's viewfinder.The logo for PictBridge, featuring a stylized graphic of two overlapping teardrop shapes above the word "PictBridge" in a bold, sans-serif font.

■ Copyrights

- Prints of material other than the images and videos that you have made can be used for your personal enjoyment. Copyright laws prevent their use in any other way without the written permission of the copyright holders.

■ Disclaimer

- Panasonic makes no warranties for damages, whether directly or indirectly, resulting from corrupted or lost data due to power failures, etc.

■ Sudden drops in voltage

- This device may not operate properly in the event of a sudden drop in power voltage. Use of this printer with an uninterruptible AC power supply is recommended to ensure against any reduction in operational performance during a sudden drop in voltage.

Additional Information (continued)

■ Trademarks

- Microsoft, Windows and Windows NT are either registered trademarks or trademarks of Microsoft Corporation in the United States and/or other countries.
This document uses the following abbreviation protocols:
Microsoft® Windows® 98 Second Edition is referred to Windows 98 SE
Microsoft® Windows® Millennium Edition is referred to Windows Me
Microsoft® Windows® 2000 Professional is referred to Windows 2000
Microsoft® Windows® XP Home Edition/Professional is referred to Windows XP
- Microsoft product screen shots reprinted with permission from Microsoft Corporation.
- Intel, Pentium and Celeron are registered trademarks or trademarks of Intel Corporation or its subsidiaries in the United States and other countries.
- IBM and PC/AT are trademarks of International Business Machines Corporation in the United States, other countries, or both.
- Macintosh is a trademark of Apple Computer, Inc.
- SD logo is a trademark.
- SDHC logo is a trademark.
- All other trademarks identified herein are the property of their respective owners.

Warranty

PANASONIC CONSUMER
ELECTRONICS COMPANY,
DIVISION OF PANASONIC
CORPORATION OF NORTH AMERICA
One Panasonic Way,
Secaucus, New Jersey 07094

PANASONIC PUERTO RICO, INC.
San Gabriel Industrial Park,
Ave. 65 de Infantería, Km. 9.5,
Carolina, Puerto Rico 00985

Panasonic Home Photo Printer Limited Warranty

Limited Warranty Coverage

If your product does not work properly because of a defect in materials or workmanship, Panasonic Consumer Electronics Company or Panasonic Puerto Rico, Inc. (collectively referred to as "the warrantor") will, for the length of the period indicated on the chart below, which starts with the date of original purchase ("Limited Warranty period"), at its option either (a) repair your product with new or refurbished parts, or (b) replace it with a new or a refurbished product. The decision to repair or replace will be made by the warrantor.

Parts	Labor
One (1) Year	One (1) Year

During the "Labor" Limited Warranty period there will be no charge for labor. During the "Parts" Limited Warranty period, there will be no charge for parts. You must carry-in or mail-in your product prepaid during the Limited Warranty period. This Limited Warranty excludes both parts and labor for batteries, and cosmetic parts (cabinet). This Limited Warranty only applies to products purchased and serviced in the United States or Puerto Rico. This Limited Warranty is extended only to the original purchaser and only covers products purchased as new.

Carry-In or Mail-In Service

For Carry-In or Mail-In Service in the United States call 1-800-211-PANA (1-800-211-7262).

For assistance in Puerto Rico call Panasonic Puerto Rico, Inc. (787)-750-4300 or fax (787)-768-2910.

When shipping the unit carefully pack, include all accessories, and send it prepaid, adequately insured and preferably in the original carton. Include a letter detailing the complaint and provide a day time phone number where you can be reached.

Warranty (continued)

IF REPAIR IS NEEDED DURING THE LIMITED WARRANTY PERIOD THE PURCHASER WILL BE REQUIRED TO FURNISH A SALES RECEIPT/PROOF OF PURCHASE INDICATING DATE OF PURCHASE, AMOUNT PAID AND PLACE OF PURCHASE. CUSTOMER WILL BE CHARGED FOR THE REPAIR OF ANY UNIT RECEIVED WITHOUT SUCH PROOF OF PURCHASE.

Limited Warranty Limits And Exclusions

This Limited Warranty ONLY COVERS failures due to defects in materials or workmanship, and DOES NOT COVER normal wear and tear or cosmetic damage. The Limited Warranty ALSO DOES NOT COVER damages which occurred in shipment, or failures which are caused by products not supplied by the warrantor, or failures which result from accidents, misuse, abuse, neglect, bug infestation, mishandling, misapplication, alteration, faulty installation, set-up adjustments, misadjustment of consumer controls, improper maintenance, power line surge, lightning damage, modification, introduction of sand, humidity or liquids, commercial use such as hotel, office, restaurant, or other business or rental use of the product, or service by anyone other than a Factory Service Center or other Authorized Servicer, or damage that is attributable to acts of God.

THERE ARE NO EXPRESS WARRANTIES EXCEPT AS LISTED UNDER "LIMITED WARRANTY COVERAGE". THE WARRANTOR IS NOT LIABLE FOR INCIDENTAL OR CONSEQUENTIAL DAMAGES RESULTING FROM THE USE OF THIS PRODUCT, OR ARISING OUT OF ANY BREACH OF THIS LIMITED WARRANTY. (As examples, this excludes damages for lost time, lost calls or messages, cost of having someone remove or re-install an installed unit if applicable, travel to and from the servicer. The items listed are not exclusive, but are for illustration only.) **ALL EXPRESS AND IMPLIED WARRANTIES, INCLUDING THE WARRANTY OF MERCHANTABILITY, ARE LIMITED TO THE PERIOD OF THE LIMITED WARRANTY.**

Some states do not allow the exclusion or limitation of incidental or consequential damages, or limitations on how long an implied warranty lasts, so the exclusions may not apply to you.

This Limited Warranty gives you specific legal rights and you may also have other rights which vary from state to state. If a problem with this product develops during or after the Limited Warranty period, you may contact your dealer or Service Center. If the problem is not handled to your satisfaction, then write to the warrantor's Consumer Affairs Department at the addresses listed for the warrantor.

PARTS AND SERVICE, WHICH ARE NOT COVERED BY THIS LIMITED WARRANTY, ARE YOUR RESPONSIBILITY.

Customer Services

Customer Services Directory

Obtain Product Information and Operating Assistance; locate your nearest Dealer or Service Center; purchase Parts and Accessories; or make Customer Service and Literature requests by visiting our Web Site at:

<http://www.panasonic.com/help>

or, contact us via the web at:

<http://www.panasonic.com/contactinfo>

You may also contact us directly at: 1-800-211-PANA (1-800-211-7262), Monday-Friday 9 am-9 pm; Saturday-Sunday 10 am-7 pm, EST.

TTY users (hearing or speech impaired users) can call 1-877-833-8855.

Accessory Purchases

Purchase Parts, Accessories and Instruction Books online for all Panasonic Products by visiting our Web Site at:

<http://www.pasc.panasonic.com>

or, send your request by E-mail to:

npcparts@us.panasonic.com

You may also contact us directly at:

1-800-332-5368 (Phone) 1-800-237-9080 (Fax Only)

(Monday - Friday 9 am to 9 pm, EST.)

Panasonic Service and Technology Company

20421 84th Avenue South, Kent, WA 98032

(We Accept Visa, MasterCard, Discover Card, American Express, and Personal Checks)

TTY users (hearing or speech impaired users) can call 1-866-605-1277.

Service in Puerto Rico

Panasonic Puerto Rico, Inc.

San Gabriel Industrial Park, Ave. 65 de Infantería, Km. 9.5,

Carolina, Puerto Rico 00985

Phone (787)750-4300, Fax (787)768-2910

Index

- A**
ACCESS Lamp 12, 90
Air Vent 13
Auto Mode 48
- C**
Calendar Printing 67
Composite Printing 74
- D**
Date Printing 39
DCF 52, 103
DPOF 37
- E**
Enlarging Images 65
ERROR Lamp 12, 90
Exif 103, 105
- F**
Feed Roller 102
- I**
Image Adjustment 45
Index Printing 35
Ink Cassette 16, 20
Ink Cassette Eject Lever 13, 21
- L**
LCD Monitor 12, 24
LUMIX Date Printing 43
- M**
Moving Images 65
MultiMediaCard 24
- N**
Normal Mode 28
Number of Copies 32
- P**
Paper and Ink Set 16
Paper Cassette 18
Paper Jam 88
Paper Jam Removal Lever 13, 89
Paper Support Lever 12, 102
PictBridge 22, 105
Power Cord 14
POWER Lamp 12, 90
Print All Images 34
PRINT Lamp 12, 90
Printer Driver 82
Protective Sheet 18
- R**
Reducing Images 65
Remote Control 13, 14
Rotating Images 65
- S**
SDHC Memory Card 24
SD Memory Card 24
Searching by Date 55
Simple Mode 28
Single-Shot View 31
Slide Show 60
Status Monitor 86
Summary View 31
- T**
Thermal Heads 94
Trimming 65
- V**
Video Cable 3, 80
Video Output Terminal (VIDEO OUT) ... 13, 80
- W**
Warranty 107

Notes

**Panasonic Consumer Electronics Company,
Division of Panasonic Corporation of North America**

One Panasonic Way, Secaucus, New Jersey 07094

Panasonic Puerto Rico, Inc.

San Gabriel Industrial Park, Ave. 65 de Infantería, Km. 9.5, Carolina,
Puerto Rico 00985

Copyright:

- This material is copyrighted by Panasonic Communications Co., Ltd., and may be reproduced for internal use only. All other reproduction, in whole or in part, is prohibited without the written consent of Panasonic Communications Co., Ltd.

© 2007 Panasonic Communications Co., Ltd. All Rights Reserved.



PX20M